

Application Programming Interface

This documentation covers the functionality of the ExtraView Programming Interface (API). This is a REpresentational State Transfer (RESTful) API. This document is intended for the experienced computer user who has a good understanding of either the UNIX, Linux, or Microsoft Windows environments from which they will use the Application Programming Interface (API). To take maximum advantage of the features offered by the API, knowledge of web-based technologies are helpful. If you intend to modify the behavior of ExtraView with user custom programming, you will need to be skilled in coding with the Java language. In addition, ExtraView administration skills are required to configure many of the functions offered.

Downloadable PDF

[The Application Programming Interface Guide is downloadable as a single PDF by clicking here.](#) You will need the [Adobe Acrobat Reader](#) to view this.

Related API Guides

- CLI - Command Line Interface
- Web Services Interface

The key features of the RESTful API are:

- Insert, update and delete records in the ExtraView database from remote applications
- Search the ExtraView database and return a set of records defined in a query
- Export information from the ExtraView database for input to a data warehouse
- Upload and download file attachments to and from the ExtraView database
- Provide limited administration access to create metadata and to manage user accounts
- Show the names of fields within the ExtraView database to which the user has access

Concepts

The RESTful API is a set of programmable HTTP calls. These calls operate on the ExtraView application to return data and metadata to the calling program or to update items within the ExtraView database.

API command summary

ADD_ATTACHMENT	uploads a file attachment to the ExtraView database
ADD_FIELD_LIST	provides an ordered list of fields that are used to insert records
ADD_USER_TO_GROUP	adds an existing user to a user group
ALLOWED_LIST	gives the list of allowed values for a key
CUSTOM	invokes a call within the CLI user exit in the UserCustom java class
DEBUG	alters the debug level of messages sent to the application server log

DELETE	deletes existing issue(s) from the database
DELETE_USER	deletes an existing user
EDIT_FIELD_LIST	provides an ordered list of fields that are used for update
FIELDS	displays a list of available fields and their screen names
FILL_IN	uses a template and fills in the values with the parameters provided
GET	retrieves a single record from the database
GET_APP_DEFAULT	retrieve an ExtraView behavior setting (deprecated)
GET_AREAS	retrieves a list of the areas in use from the database
GET_ATTACHMENT	downloads a copy of a file from an issue attachment
GET_BEHAVIOR_SETTING	retrieve an ExtraView behavior setting (supercedes GET_APP_DEFAULT)
GET_FIELDS	download a specific field or fields from an existing issue
GET_HEARTBEAT	return a status indicator to show that ExtraView is alive
GET_LOG	returns the contents of the application server log
GET_PROJECTS	retrieves a list of projects for a given area from the database
GET_REPORTS	retrieves a list of the reports currently available to the user
GET_ROLES	retrieves the available roles for a specified user from the database
GET_TITLE	retrieve data dictionary information on a field
GET_TOKEN	retrieves an authentication token
GET_USERS	retrieve a list of user names from the database
GET_VALID_META_DATA	retrieve the metadata for an issue
HISTORY	retrieve all records from a specified point in time
IMPORT_ALLOWED_VALUES	import allowed values from a file into ExtraView
INSERT	inserts new records into the ExtraView database
INSERT_USER	create a new user account
INSERT_XML	inserts a new record into ExtraView from XML formatted input data
ITEM_EXISTS	checks whether an issue exists in the database
LIST_ATTACHMENT	retrieves a list of file attachments against a single issue
RUN_REPORT	runs a report that has been defined within ExtraView
SEARCH	provides a general search and retrieval mechanism
SEARCH_FIELD_LIST	provides a list of fields that can be searched for

SET_AREA_PROJ	sets the working area and project
SET_ROLE	sets the working role of the user
UPDATE	updates existing records in the ExtraView database
UPDATE_USER_PASSWORD	updates a user's password
USER_FIELD_LIST	displays an ordered list of fields for the user record
USER_GROUP_LIST	displays a list of user roles ordered by the user role title
VERSION	returns the version number and build number of ExtraView

Authentication

All API commands require authentication. This can take one of three forms:

1. Each call may embed parameters for a valid User ID and a valid password
2. An API call may request a token for subsequent calls using the `get_token` command. This call must include a valid User ID and password, but subsequent calls may use the token. This is more secure than the first form, as the password is only passed on the first access, until the token used in the subsequent calls expires. This is the most secure form of access
3. A behavior setting named `ALLOW_ANONYMOUS_API_ACCESS` may turn off authentication via the API. This is the least secure method of access.

The setting `ALLOW_ANONYMOUS_API_ACCESS` allows anonymous access to ExtraView. Most commonly, this is used to provide a web page that you have designed to perform transactions, or to query the ExtraView database, not to need a hard-coded username and password. To preserve a secure environment, it is necessary to perform the following steps to set up anonymous access:

1. Within the ExtraView administration section, under the Systems Control tab and within the API Settings section, set the behavior setting named `ALLOW_ANONYMOUS_API_ACCESS` to have a value of YES
2. In the same section, set the application default named `ANONYMOUS_API_USER_ID` to the user ID that you will use for the anonymous access
3. All entries made in an anonymous fashion will use this user ID to log their activities
4. Ensure that you only give security privileges to the user group to which this user ID belongs that is in keeping with the fact that this user is used to log all activities. Normally this means that this user group will have limited access to fields, especially in write and query modes
5. It is recommended that when you allow users to enter issues in an anonymous fashion, that you have ExtraView fields that capture their names and other contact details

Once you have set up anonymous access, the parameters named `user_id` and `password` in all API commands become optional. If they are provided, they must be valid combinations of user names and passwords.

Requests Passed to the API

To create an API call, the user creates an HTTP request (HTTPRequest object) and submits this to the server. This request can be composed within virtually any computer language. Each HTTP request is composed of the following parts:

- The server domain name, including the path to the servlet where ExtraView is running. For example, `http://www.myserver.com/evj/ExtraView`
- The class and method which accesses the API. Usually this is `ev_api.action`
- The `user_id` and password for the user, passed as name / value pairs or an unexpired token
- The statevar, passed as a name / value pair. This parameter defines the specific API call being made
- A list of name / value pairs providing the parameters and their values for the API call, and which are necessary or optional to execute the API call. Note that the user is responsible to provide a correct list of parameters for each call. If the API does not recognize a parameter, then it is ignored and no warning is given to the user.

If you are creating your own `HTTPRequest` object from a programming environment to call the ExtraView API, then you must also set the standard parts of the `HTTPRequest` object, such as the `USER_AGENT`. There will most probably be standard libraries for your environment to assist in doing this.

XML Data Returned From API Calls

Much of the data returned by an API call is in XML format. This has some significance to the user of the API, in that Extraview's XML data may embed your own XML within its results. To accommodate this, ExtraView uses Base64 encoding whenever it sees XML data returned from the application to ensure that the XML returned by API commands through the API must be well-formed. This means that the contents of a CDATA string must not contain the character string `"]]>`, because that is the end sentinel for a CDATA section. So, if the original data contains this string, there must be some way to escape the data. For easy recognition of an escaped CDATA string, ExtraView prepend the characters `%25S` to the front of the string. These characters are merely a sentinel and are not part of the output string. The encoding used for the rest of the CDATA string is called Base64, and algorithms for encoding/decoding are widely available. Furthermore, ExtraView ensures that the `%25S` sentinel string does not appear in the CDATA raw character string by encoding any CDATA raw character string to Base64 as well. It is the responsibility of the receiver, therefore, to test each CDATA section for the sentinel characters `%25S` at the beginning of the CDATA, and, if present, perform the Base64 decode function on the remainder of the character data to get the raw character values in the field.

Server-side Templates

Server-side templates can be defined for many API commands. These templates allow you to control the presentation of the output from the API command. Most commonly this is used to allow the administrator to integrate ExtraView with their company's own web site. For example, a page within your company's web site can perform a search of the ExtraView database and return the results formatted with the same look and feel as the web site.

Templates allow you to use "tags" that are substituted at runtime, with the actual value in a record. For example, the tag `__STATUS__` refers to the value of the `STATUS` field of the current record. Tags are available for most fields in the data dictionary. In addition, if you place a data dictionary field on a template, it must exist on the Detailed Report layout inherited by the specific Business Area and Project. The user must also have read permission to the field.

[See this page](#) for full details of server-side templates.

Repeating Row Records and the API

Output from ExtraView using repeating rows can be turned off, to simplify the XML returned from a command. To use repeating rows within the API, you must set the behavior setting named

MULTI_RELEASE_XML to a value of YES within the administration section.

The following API commands support repeating rows:

- GET
- GET_FIELDS
- HISTORY
- INSERT – note that you can only insert a single repeating row when inserting an issue, but you can then update that issue with additional repeating rows
- RUN_REPORT
- UPDATE – note that you can only update a single repeating row with a single update command.

The commands that return XML will do so as shown in the following example:

```
<REPEATING_ROWS TITLE='Repeating Rows' REPEATING_ROWS='1'>
  <REPEATING_ROW REPEATING_ROW_ID='1073779532'>
    <FRED_RR TITLE='Repeating row fred'>
      <![CDATA[a new fredrr]]>
    </FRED_RR>
    <RELEASE_CHILD_STATUS TITLE='Branch Status'>
      <![CDATA[Assigned]]>
    </RELEASE_CHILD_STATUS>
    <RELEASE_REQUESTED_RELEASE TITLE='Requested Release'>
      <![CDATA[4.0.3.14]]>
    </RELEASE_REQUESTED_RELEASE>
    <RELEASE_COMMITTED_RELEASE TITLE='Committed Release'>
      <![CDATA[4.0.3.14]]>
    </RELEASE_COMMITTED_RELEASE>
  </REPEATING_ROW>
  <REPEATING_ROW REPEATING_ROW_ID='1073779542'>
    <FRED_RR TITLE='Repeating row fred'>
      <![CDATA[a new fredrr2]]>
    </FRED_RR>
    <RELEASE_CHILD_STATUS TITLE='Branch Status'>
      <![CDATA[Assigned]]>
    </RELEASE_CHILD_STATUS>
    <RELEASE_REQUESTED_RELEASE TITLE='Requested Release'>
      <![CDATA[4.0.3.13]]>
    </RELEASE_REQUESTED_RELEASE>
    <RELEASE_COMMITTED_RELEASE TITLE='Committed Release'>
      <![CDATA[4.0.3.13]]>
    </RELEASE_COMMITTED_RELEASE>
  </REPEATING_ROW>
  <REPEATING_ROW REPEATING_ROW_ID='1073779552'>
    <FRED_RR TITLE='Repeating row fred'>
      <![CDATA[a new fredrr3]]>
    </FRED_RR>
    <RELEASE_CHILD_STATUS TITLE='Branch Status'>
      <![CDATA[Assigned]]>
    </RELEASE_CHILD_STATUS>
    <RELEASE_REQUESTED_RELEASE TITLE='Requested Release'>
      <![CDATA[4.2.2.7]]>
    </RELEASE_REQUESTED_RELEASE>
    <RELEASE_COMMITTED_RELEASE TITLE='Committed Release'>
      <![CDATA[4.2.2.8]]>
    </RELEASE_COMMITTED_RELEASE>
  </REPEATING_ROW>
</REPEATING_ROWS>
```

The data structures here are:

1. Repeating Rows Element -- at most one per issue extracted:

```
<REPEATING_ROWS TITLE='Repeating Rows' REPEATING_ROWS='1'> ... (repeating row elements) </REPEATING_ROWS>
```

2. Repeating Row Elements – as many as there are repeating rows in the issue extracted:

```
<REPEATING_ROW REPEATING_ROW_ID='nnnnnnn'> ... (repeating row field elements) </REPEATING_ROW>
```

3. Repeating Row Field Elements – one for each field inside the repeating row:

```
<fieldTag TITLE='fieldTitle'> <![CDATA[fieldData]]> </fieldTag>
```

where – fieldTag = data dictionary field name fieldTitle = title of the field fieldData = data contained in the field (in CDATA-encoded format)

Updating and Inserting Fields in Repeating Row Data

Previous to release 4.2.2.8, the API did not handle repeating row records, therefore the previous format for for update of fields within an issue is maintained for backward compatibility. An extension is made to allow for the insertion or the update of one or more specific repeating row fields as follows.

Updating Repeating Rows

To update an existing repeating row field, there must be a parameter named `PROBLEM_RELEASE_ID` in the update parameter set. This parameter may have multiple values, each one specifying a specific repeating row ID (i.e. the `ITEM_ID` of the repeating row within the issue). The field values associated with these repeating rows are specified in a parallel set of parameters, named for the field name within the repeating row. Each such parameter may be given mutiple values, each of which maps to a repeating row as specified by the multiple values of `PROBLEM_RELEASE_ID`.

As an example, assume that there are 5 repeating rows in issue #100, numbered 201, 202, 203, 204, and 205.

Then with `PROBLEM_RELEASE_ID` set to the values (202, 204), the value of `FRED_RR`, a repeating row-resident field, might take on the values ("fred202", "fred204") in the input parameters.

Then, the repeating rows with the ID's of 202 and 204 are updated with the value of `FRED_RR` being set to "fred202" and "fred204" respectively. No other repeating rows would be affected by the update.

Inserting Repeating Rows

Inserting repeating rows is similar to updating repeating rows, except no `PROBLEM_RELEASE_ID` is given as a parameter. When no `PROBLEM_RELEASE_ID` is present, ExtraView will insert the remaining fields as a new repeating ROW.

You can insert multiple repeating rows with a single API call. For example, the following parameter string will insert three repeating row records, each within a single field named `FRED_RR`:

```
&FRED_RR=val1&FRED_RR=val2&FRED_RR=val3
```

Repeating Row Example

First, make sure you have set the behavior setting named `MULTI_RELEASE_XML` to `YES`. The following examples assume you have an ExtraView server located at `http@//extraview.myserver.com/evj/ExtraView`.

Retrieving an Issue

We will first retrieve issue number 26788 from ExtraView. This issue has existing repeating rows.

```
http@//extraview.myserver.com/evj/ExtraView/ev_api.action?user_id=myname&password=mypass&statevar=get&id=26788
```

ExtraView returns XML data that includes a section about Repeating Rows. The XML is shown indented here for clarity.

```
... ..
<REPEATING_ROWS TITLE="Repeating Rows" REPEATING_ROWS="1">
  <REPEATING_ROW REPEATING_ROW_ID="1073788412">
    <RELEASE_SOURCE_CODE_BRANCH TITLE="Code Branch">
      <![CDATA[ 4.3 ]]>
    </RELEASE_SOURCE_CODE_BRANCH>
    <RELEASE_CHILD_STATUS TITLE="Branch Status">
      <![CDATA[ Assigned ]]>
    </RELEASE_CHILD_STATUS>
    <RELEASE_REQUESTED_RELEASE TITLE="Requested Release">
      <![CDATA[ 4.3.1 ]]>
    </RELEASE_REQUESTED_RELEASE>
    <RELEASE_COMMITTED_RELEASE TITLE="Committed Release">
      <![CDATA[ 4.3.1 ]]>
    </RELEASE_COMMITTED_RELEASE>
  </REPEATING_ROW>
  <REPEATING_ROW REPEATING_ROW_ID="1073791532">
    <RELEASE_SOURCE_CODE_BRANCH TITLE="Code Branch">
      <![CDATA[ 4.4 ]]>
    </RELEASE_SOURCE_CODE_BRANCH>
    <RELEASE_CHILD_STATUS TITLE="Branch Status">
      <![CDATA[ Open ]]>
    </RELEASE_CHILD_STATUS>
    <RELEASE_REQUESTED_RELEASE TITLE="Requested Release">
      <![CDATA[ 4.4 ]]>
    </RELEASE_REQUESTED_RELEASE>
    <RELEASE_COMMITTED_RELEASE TITLE="Committed Release">
      <![CDATA[ 4.4 ]]>
    </RELEASE_COMMITTED_RELEASE>
  </REPEATING_ROW>
</REPEATING_ROWS>
... ..
```

The important data you need is located at `.` This provides the unique identifier for the particular repeating row of the issue.

Updating an Issue

To update the field named `RELEASE_CHILD_STATUS` field within the repeating record field just

retrieved from the example above:

```
http://extraview.myserver.com/evj/ExtraView/ev_api.action?user_id=myname&password=mypass&statevar=update&id=26788&problem_release_id=1073788412&RELEASE_CHILD_STATUS=6936
```

Inserting an Issue

To insert a new issue, including one repeating row:

```
http://extraview.myserver.com/evj/ExtraView/ev_api.action?user_id=myname&password=mypass&statevar=insert&area_id=4&project_id=8&category=SOFTWARE &short_descr=Testing&product_name=EVJAVA&module_name=DATABASE&RELEASE_CHILD_STATUS=6936&description=blah
```

The presence of the field named RELEASE_CHILD_STATUS, as the only field in the example that has exists within a repeating row record, causes a new repeating row record to be created.

Server-Side Templates

Server-side templates can be defined for many API and CLI commands. These templates allow you to control the presentation of the output from the API command. Most commonly this is used to allow the administrator to integrate ExtraView with their company's own web site.

For example, a page within your company's web site can perform a search of the ExtraView database and return the results formatted with the same look and feel as the web site.

Templates allow you to use "tags" that are substituted at runtime, with the actual value in a record. For example, the tag `__STATUS__` refers to the value of the STATUS field of the current issue. Tags are available for most fields in the data dictionary. In addition, if you place a data dictionary field on a template, it must exist on the **Detailed Report** layout inherited by the specific Business Area and Project. The user must also have read permission to the field.

TEXTAREA, LOGAREA and PRINTTEXT fields have special handling within ExtraView. This is because they can be broken down into three components, the text itself, the user's name who entered the text, and a timestamp. Each of these components can be accessed individually, as shown in the following example. Note that the field name itself must be included as a tag, although it does not display anything in the output. Therefore, an HTML fragment that might display the DESCRIPTION field may look like:

```
<TD>
  __DESCRIPTION__
  __DESCRIPTION.USER__ : __DESCRIPTION.TIMESTAMP__
<BR><BR>
  __DESCRIPTION.TEXT__
<BR>
</TD>
```

The full explanation for each part of the field is as follows, where DDNAME is the data dictionary name of

the field of display type TEXTAREA, LOGAREA or PRINTTEXT.

Field name	Explanation
<code>__DDNAME__</code>	A tag with the data dictionary name must be included in the template. No output occurs with this tag. It is a placeholder that ensures the remaining fields will be processed correctly
<code>__DDNAME.TEXT__</code>	This is used to return the body of text within the comments
<code>__DDNAME.USER__</code>	This is used to return the name of the user who entered the comment
<code>__DDNAME.TIMESTAMP__</code>	This is used to return the date (and time) that the comment was entered. This will be returned in the current user's date and time format that is defined in their personal settings

Three special tags are not fields in the data dictionary:

Tag name	Explanation
<code>__RESULTS__</code>	this tag returns the result string that is sent, upon execution of a call to the API. For example, if you use an HTML form to insert a record into ExtraView, and define a template that contains only the tag <code>__RESULTS__</code> , then the output would be: Problem #12342 added.
<code>__ERR_RESULTS__</code>	this tag returns any error as a result of executing the API command. It is often used in conjunction with an error handling template, as described below
<code>__RECORD_COUNT__</code>	this tag returns the number of records found from the API action named search. You may use this field in the header or footer section of a template (see below), but not in the body part of a template.

The API commands that work with templates are:

- delete
- fill_in
- get
- insert
- insert_user
- list_attachment
- search
- update
- update_user_password

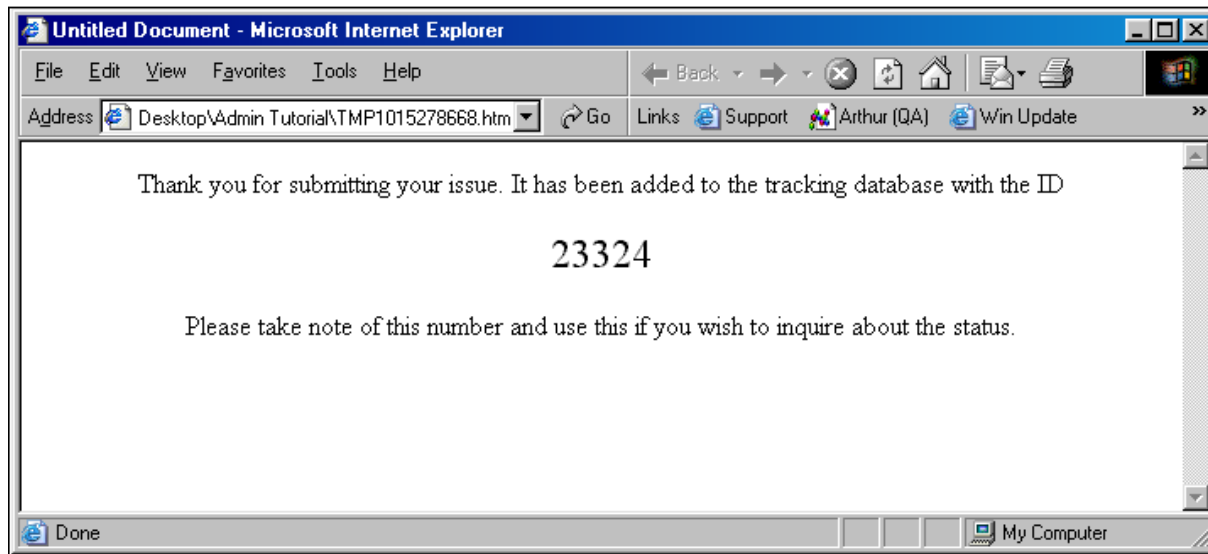
The templates must be stored in a directory in your environment, typically located within your installation in a directory named `user_templates`. This directory is placed within your ExtraView installation, at the same level as the templates directory that resides inside the WEB-INF directory. This location may vary according to how you installed ExtraView. The ExtraView Administration screens have a feature that allows you to upload files directly to this directory from your local computer. Templates are processed slightly differently, according to whether they are intended to generate text or generate HTML. First, the assumption is that if the template name has a suffix of `.html` or `.htm`, then it is assumed that it will generate HTML code. With all other file suffixes, the assumption is that they contain text. If they are HTML templates:

- The api calls *search* and *get* will have escaping enabled
- Fields that have **display_as_url** set as attribute in the data dictionary will be rendered as HTML
- Blank or null values in fields will result in ** ** being rendered

The template you define can be in one of two forms:

Stand-alone templates, used to format the results

Desired Output



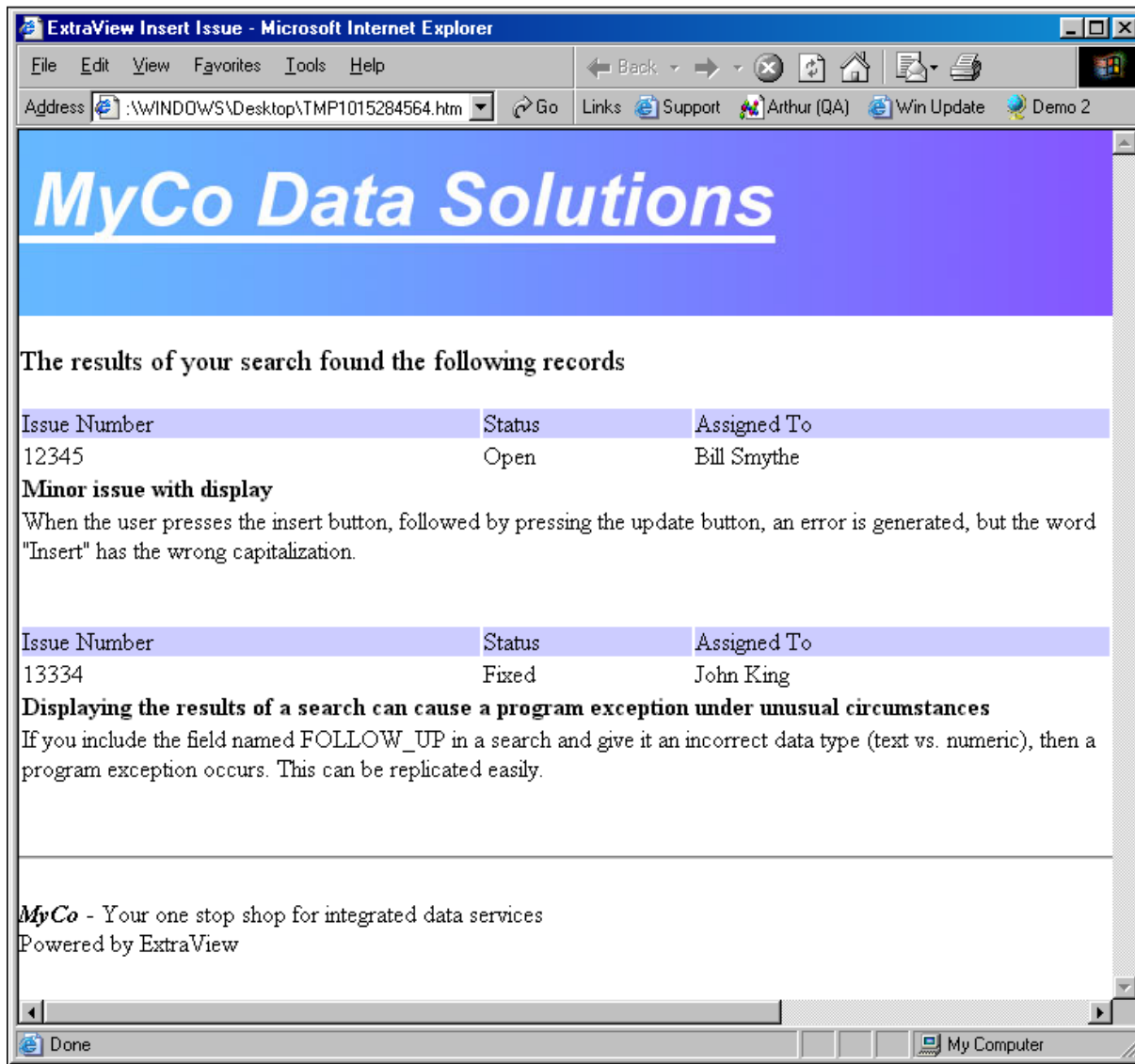
Sample Template Code

```
<html>
<head>
<title>ExtraView Insert Issue</title>
</head>
<body bgcolor="#FFFFFF">
<p align="center">Thank you for submitting your issue. It has been added to the tracking
database with the ID</p>
<p align="center"><font color="#000000" size="5"> __ID__ </font></p>
<p align="center">Please take note of this number and use this if you wish to inquire
about the status.</p>
</body>
</html>
```

Structured Formatting of Results

This is composed of a template structure that may have up to three sections, each of which resides in a separate file. Each file name is defined by prefixing the template name with the letter h, b or f, according to whether it is the header section, body section or the footer section. Each section is optional, although it makes no real sense to not have the body section.

Overall Desired Output



Sample Template Code

The template code is split into three files representing the fixed header, the repeating body and the fixed footer.

Header File - file name begins with "h"

```
<html>
<head>
<title>ExtraView Insert Issue</title>
</head>
<body bgcolor="#FFFFFF" leftmargin="0" topmargin="0">
<p></p>
<p><font size="4">The results of your search found the following records</font> </p>
<table width="100%" border="0" cellpadding="0">
```

Body File - file name begins with "b"

```

<tr bgcolor="#CCCCFF">
<td>Issue Number</td>
<td>Status</td>
<td>Assigned To</td>
</tr>
<tr>
<td>__ID__</td>
<td>__STATUS__</td>
<td>__ASSIGNED_TO__</td>
</tr>
<tr>
<td colspan="3"><b>__SHORT_DESCR__</b></td>
</tr>
<tr>
<td colspan="3">__REPEAT_START__ __Description__ __REPEAT_STOP__</td>
</tr>

```

Footer File - file name begins with "f"

```

</TABLE>
<hr>
<p><i><b>MyCo</b></i> - Your one stop shop for integrated data services<br> Powered by
ExtraView</p>
</body>
</html>

```

The fill_in Template

It is sometimes useful to be able to generate a template and populate it with values that do not originate in ExtraView's database. The fill_in action fulfills this need.

Syntax

```

http://www.myserver.com/evj/ExtraView/ev_api.action?user_id=username &password=password&
statevar=fill_in&p_template_file=this_template.html&id=12345 &any_name_at_all=Phyllis%20Mitchell
... ..

```

The template file, this_template.html, will be returned to the user's screen, with the values for id and any_name_at_all filled in.

Sample Template File

```

<html>
<head>
<title>ExtraView Entry Details</title>

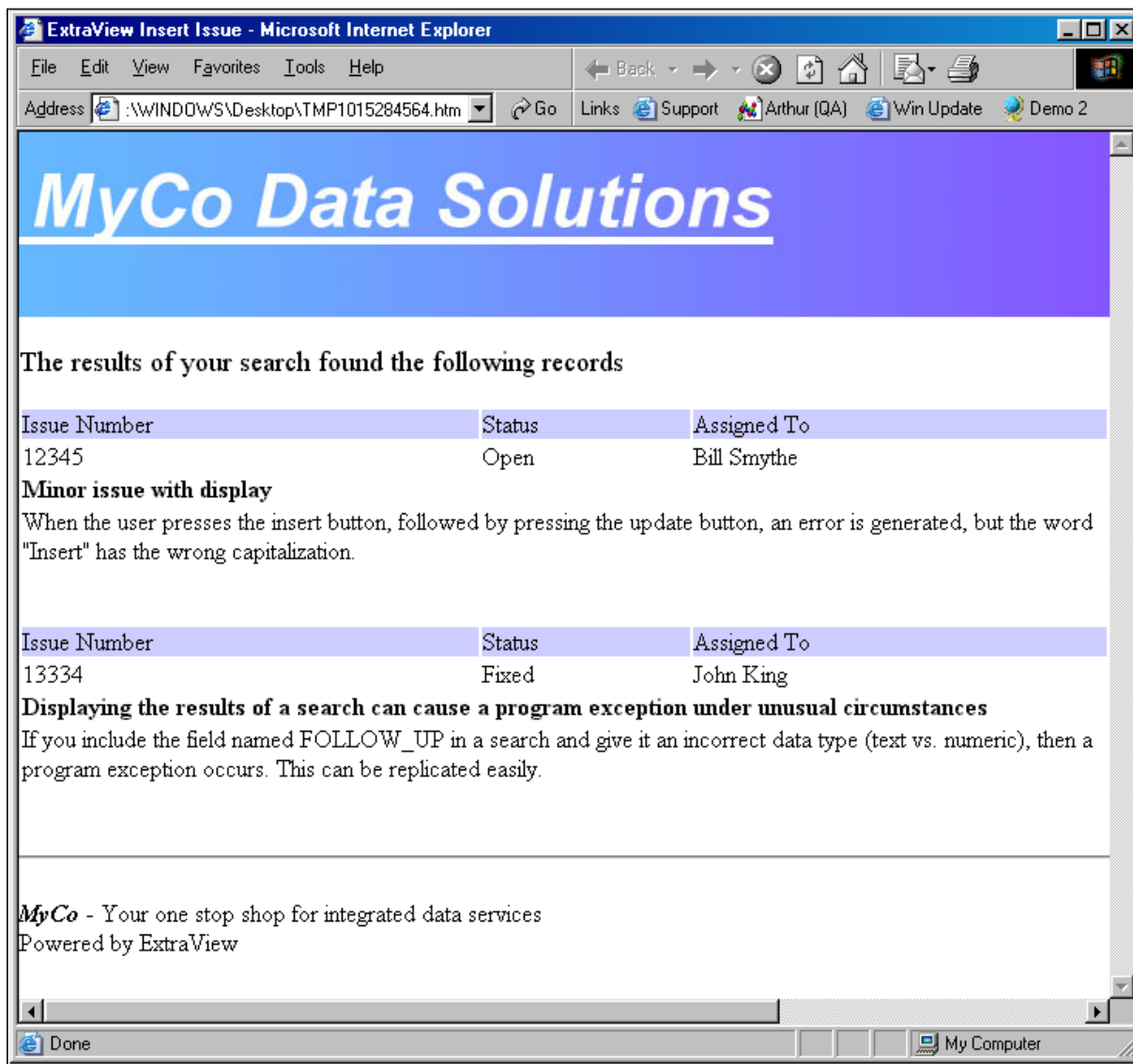
```

```

</head>
<body>
<hr>
<p align=center>The ID for the problem is __ID__ and it was entered by
__ANY_NAME_AT_ALL__.</p>
<hr>
</body>
</html>

```

Browser Output



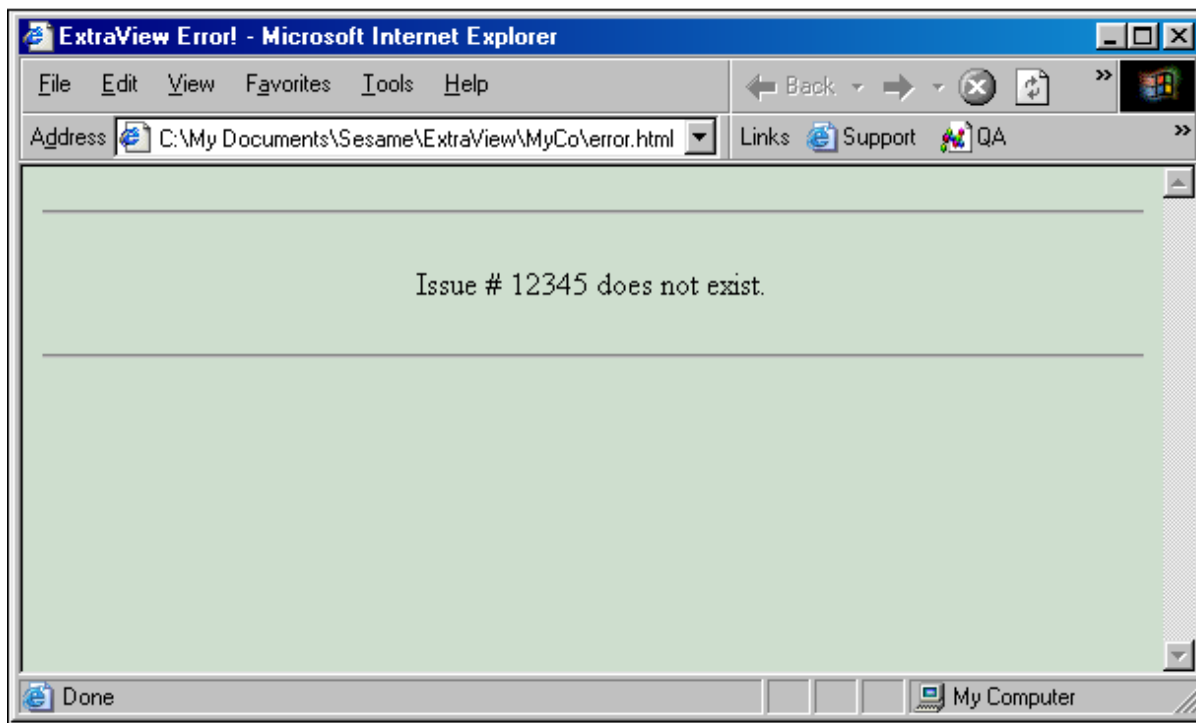
The error.html Template

If the code that executes in the API command that was submitted completes with an error or unexpected condition, the template named error.html is invoked and used to display the error to the user. Within this template, the tag `__ERR_RESULTS__` is replaced with the actual error message from the command being executed.

Sample Template File

```
<html>
<head>
<title>ExtraView Error!</title>
</head>
<body bgcolor="#cedece">
<hr>
<p align=center>__ERR_RESULTS__</p>
<hr>
</body>
</html>
```

Browser Output



Executing ExtraView Functions

From within an ExtraView screen, you may want to add a new issue or edit an existing issue. This is typically driven by the “Display as URL” data dictionary function. This places a button on a form beside the field described in the data dictionary when you are on the add or edit screens. The “Display as URL” function can be used to open URL’s both external to ExtraView and internal to ExtraView.

The reasons for doing this are various and typically related to integrating ExtraView with other enterprise applications.

It is possible to execute many different URLs within ExtraView with this technique, but some may have unpredictable results, according to the context of the request you are making. This documentation does not attempt to offer an exhaustive list of supported functions, but lists the most useful functions. Please contact

ExtraView support if your requirement goes beyond this list and you have problems getting the desired functionality. All commands must be executed on a single line, but are shown with one parameter per line for clarity.

Common Parameters

Some parameters are common to all commands. These are described as:

Parameter	Purpose
<code>p_action</code>	This is the name of the Java class within ExtraView that is being called from the command. This is a mandatory parameter
<code>p_option</code>	This is the name of the method within the Java class that is being called from the command. This is a mandatory parameter
<code>ev_menu</code>	This may have the value of <code>off</code> or <code>on</code> . <code>off</code> is the default. This determines whether a navigation bar will be placed on the window that is opened as a result of executing the command, within the standard user interface
<code>p_output_type</code>	This may be one of <code>HTML</code> , <code>PDF</code> , <code>TEXT</code> , <code>MS_EXCEL</code> , <code>MS_FORMATTED_EXCEL</code> or <code>MS_WORD</code> depending on the output you require. Not all output types are valid for all functions. The default is <code>HTML</code>
<code>p_close_win</code>	This is typically used with the standard user interface when adding or updating issues. After the add or update performed by the user, the browser window will be closed if this parameter is present, with a value of <code>false</code>
<code>ev_signoff</code>	This optional parameter may have the values <code>yes</code> or <code>no</code> . This parameter signs the user off from their ExtraView session after the command is completed. This command requires the behavior setting named <code>AUTO_SIGNOFF_ON_USER_EXIT</code> to be set to <code>YES</code> before it has any effect

In the following commands, part of the URL structure is `evSignon`. This ensures that the user must go through the sign on process to reach the page or function. If the user is already signed on, then ExtraView redirects the user directly to the page. If the user is not signed on, the user must provide their sign on credentials, and then they are taken to the page.

ExtraView allows a user to open several separate sessions within their browser, if the browser supports the ability to run concurrent sessions of the same application. In the case that several sessions are open within the user's default browser and one of the following commands is issued, there is no certainty to which browser session the command will be serviced. ExtraView has no control over which session the browser chooses.

Adding an Issue

Syntax

```
http://www.myserver.com/evj/ExtraView/evSignon
?p_action=doAddDisplay
&p_option=Display
&p_close_win=true
```

```
&ev_menu=off
&p_ddname_1=value
... ..
&p_ddname_n=value
```

Notes

Use the name of your server installation in place of `http://www.myserver.com/evj/ExtraView`.

If the optional parameter `p_close_win` has a value of `true`, then the *add* window will be closed when the issue is successfully updated by the user. If you set `p_close_win` to `true`, it is recommended that you also set `ev_menu` to `off`.

The optional parameter `ev_menu=off` will suppress the navigation bar within the new window that is opened to add the issue.

You may populate fields on the *add* screen that is generated, by using the convention `p_ddname=value`. Note that you should escape text fields containing special characters. For example, to add the title field to a new issue, you may use a parameter such as:

```
p_short_descr=This%20is%20the%20title%20of%20the%20issue
```

If the user is signed on when the command is issued, a new *edit* window will be opened immediately. If the user is not signed on, then the user is first taken to the sign on screen where they must sign on, before being allowed to edit the issue.

Editing an Issue

Syntax

```
http://www.myserver.com/evj/ExtraView/evSignon
?p_action=doEditDisplay
&p_option=Display
&p_id=nnnnn
&p_from_action=search
&p_from_option=search
&p_close_win=true
&ev_menu=off
```

Notes

Use the name of your server installation in place of `http://www.myserver.com/evj/ExtraView`

Replace `nnnnn` with the issue number you want to edit

If the optional parameter `p_close_win` has a value of `true`, then the *edit* window will be closed when the issue is successfully updated by the user.

The optional parameter `ev_menu=off` will suppress the navigation bar within the new window that is opened to edit the issue. If the user is signed on when the command is issued, a new *edit* window will be opened immediately.

If the user is not signed on, then the user is first taken to the sign on screen where they must sign on, before being allowed to edit the issue.

The Email Drilldown Link

This is a special case of a drilldown used by ExtraView, providing the drilldown from within the body of an email to ExtraView. It is provided here for completeness, as it can often be used for other purposes.

Syntax

```
http://www.myserver.com/evj/link.html
?p_action=doEditDisplayEmail
&p_option=Display
&p_id=nnnnn
&p_from_action=email
&p_from_option=email
```

Notes

Use the name of your server installation in place of `http://www.myserver.com/evj/`.

Replace `nnnnn` with the issue number you want to edit.

If the user is signed on when the command is issued, a new *edit* window will be opened immediately. If the user is not signed on, then the user is first taken to the sign on screen where they must sign on, before being allowed to edit the issue. Prior to version 8.0, the syntax of this link was different. The old syntax still works, but does not open an issue within the current workspace, and will only open an issue in a new browser window. If you wish to use the old format, the syntax is:

```
http://www.myserver.com/evj/ExtraView/evSignon
?p_action=doEditDisplayEmail
&p_option=Display
&p_id=nnnnn
&p_from_action=email
&p_from_option=email
&p_close_win=true
&ev_menu=off
```

If the optional parameter `p_close_win` has a value of `true`, then the *edit* window will be closed when the issue is successfully updated by the user. The optional parameter `ev_menu=off` will suppress the navigation bar within the new window that is opened to edit the issue.

Running a Detailed Report

This function will allow you to send a URL to ExtraView, and immediately run a detailed report for an issue. If you are not signed on as a user, ExtraView will take you first to the sign on screen to authenticate your user details. You must know the id of the issue you want to display to be able to use this function.

Syntax

```
http://www.myserver.com/evj/ExtraView/evSignon
?p_option=search.SearchReportDetailDisplay
&p_action=doRunDetailed
&id=nnnnn
```

Running a Quicklist

Syntax

This example will access ExtraView's search class and produce a Quicklist report, using the values in the display field named searchword, and the current values of the product_name and assigned_to fields as filters for the query.

```
http://www.myserver.com/evj/ExtraView/
?p_action=doRunQuicklist
&p_option=search.SearchDisplay
&searchword=$$VALUE$$
&product_name=$$PRODUCT_NAME$$
&assigned_to=$$ASSIGNED_TO$$
```

Running Saved Reports

These functions allow you to send a URL to ExtraView, and immediately run an existing saved report to your browser. If you are not signed on as a user, ExtraView will take you first to the sign on screen to authenticate your user details. You must know the report_id of the report you want to run to be able to use this function.

If you do not know the ID of the report, this is easily found from the report editor for the report type. Edit the report and place your mouse cursor over the box to the right of the report title. This shows the details of the report, including its ID. Alternatively, you can execute the API command get_reports, to see the report_id for all reports.

The p_output_type parameter may be set according to this table:

Report Type	Browser	Text	MS Word	MS Excel Plain	MS Excel Formatted	PDF
Admin	X	X	X	X	X	X
Aging	X	X	X	X	X	X
Calendar	X					
Chart	X					X
Column	X	X	X	X	X	X
Container						
Geospatial	X					X
Layout						

History	X	X	X	X	X	X	X
Matrix	X	X	X	X	X	X	X
Summary	X	X	X	X	X	X	X
Taskboard	X						
Treegrid	X	X	X	X	X	X	X

Column Reports

http://www.myserver.com/evj/ExtraView/evSignon?p_option=search.SearchReportDisplay&p_action=doRunReport&p_output_type=HTML&report_id=nn

Matrix Reports

http://www.myserver.com/evj/ExtraView/evSignon?p_option=search.SearchMatrixReport&p_action=doRunReport&p_output_type=HTML&report_id=nn

Summary Reports

http://www.myserver.com/evj/ExtraView/evSignon?p_option=search.SearchSummaryReport&p_action=doRunReport&p_output_type=HTML&report_id=nn

Aging Reports

http://www.myserver.com/evj/ExtraView/evSignon?p_option=search.SearchAgingReport&p_action=doRunReport&p_output_type=HTML&report_id=nn

Calendar Reports

http://www.myserver.com/evj/ExtraView/evSignon?p_option=search.SearchCalendarReport&p_action=doRunReport&p_output_type=HTML&report_id=nn

Planning Reports

```
http://www.myserver.com/evj/ExtraView/evSignon
?p_option=search.SearchPlanningReport
&p_action=doRunReport
&p_output_type=HTML
&report_id=nn
```

Charts

```
http://www.myserver.com/evj/ExtraView/evSignon
?p_option=search.SearchChartReport
&p_action=doRunReport
&p_output_type=HTML
&report_id=nn
```

Taskboard Reports

```
http://www.myserver.com/evj/ExtraView/evSignon
?p_option=search.SearchTaskBoardDisplay
&p_action=doRunReport
&p_output_type=HTML
&report_id=nn
```

Dashboard Reports

```
http://www.myserver.com/evj/ExtraView/evSignon
?p_option=search.DashboardReport
&p_action=doRunReport
&p_output_type=HTML
&report_id=nn
```

Pop-up List of User Details

The purpose of this local function is to allow the administrator to program a user list or user pop-up field with the ability to pop-up a new child window, with the complete details of the user whose name is selected in the user list.

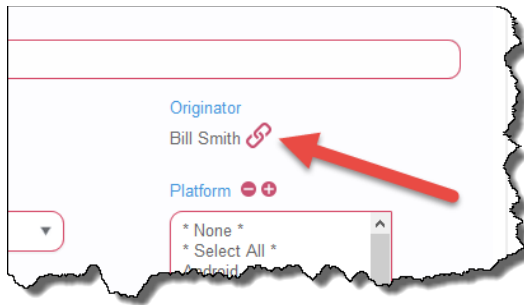
An example of how to use this function is to provide a pop-up window for the ORIGINATOR of issues within ExtraView. To achieve this, set the following text (on a single line) into the data dictionary URL field for the ORIGINATOR field:

```
?p_option=admin.UserAccountsDisplay
&p_action=showUserDetails
&p_user_id=$$NAME$$
```

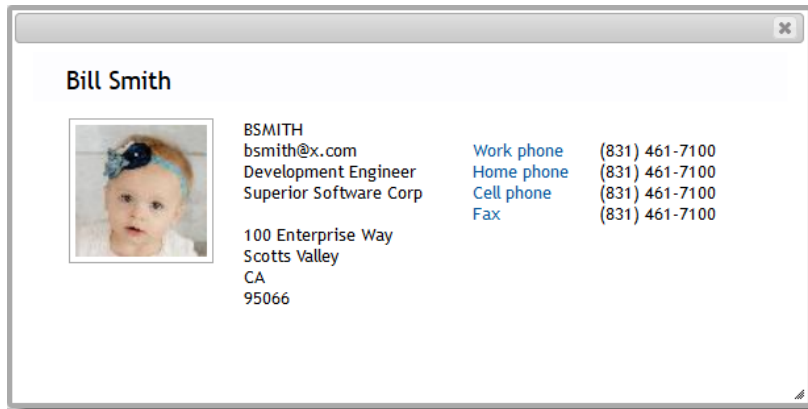
Now select Yes as the value for the field Display as URL.

Update the field in the data dictionary.

A link button will now appear by the ORIGINATOR field on both the add and edit screens as shown here.



When you press the link button, a window will pop up that shows the user's details, similar to the following.



Static Web Page Access

A common requirement is to be able to integrate ExtraView seamlessly into your own web site, allowing your own users to use a subset of ExtraView's capabilities. Most often, these users will be anonymous within ExtraView (i.e. they will not have their own user name and password), but their user details will be trapped as part of the record, for follow up.

ExtraView allows you to call it remotely, typically using a guest login, with limited privileges, to prevent "hacking" by an irresponsible user. The steps to achieving this are typically:

- Create or use an existing GUEST user group within the ExtraView administrative function
- Create a guest user account within ExtraView
- Use the Security Privileges to limit the fields that the GUEST user group can see and update. These will vary with the installation
- Implement HTML forms within your own website on pages. Most typically, there will be two such pages. One will allow your users to submit new issues, and one will allow users to search ExtraView for specific issues or with a keyword search
- This may also be coupled with creating specific fields within ExtraView that are used to store information that you want your users to see, as opposed to fields that are for internal use by your engineering or QA or other staff
- You may also use the privacy features of ExtraView. The ExtraView Administration Guide will help you understand this feature in depth. Issues can be either Public or Private. This means that only users internal to your company and users within the company that reported the issue have access to the records if they are Private. If the issues are Public, then everyone can see them. You may also take a more sophisticated approach, by using Privacy Groups. These allow you to set up groups of individuals that can see specific issues, irrespective of their user group or other privileges.

HTML Pages that access ExtraView remotely

The following example shows how suitable pages can be designed. They all use the ability of ExtraView to support anonymous access, assuming the administrator has provided this facility. See the ExtraView Administrator's Guide for more information.

First, let us design a screen that allows our anonymous users to add new issues to ExtraView. It looks like this:

Report a New Issue to MyCo

Please complete this form to submit your issue. Your issue will be entered automatically in our support system and you will receive a response from us.

Enter title

Enter description

Your name

Your email address

Your phone number

Copyright © 2020 ExtraView Corporation

The HTML source to this page is:

```
<html>
<head>
  <title>Submit an Issue to MyCo</title>
  <meta http-equiv="Content-Type" content="text/html; charset=iso-
8859-1">
</head>
<script>
  function setState(button) {
    if (document.AddIssue.statevar.value != "Submitted") {
      button.form.statevar.value = button.name;
    }
    if (button.value=="Submitted") {
      alert("This form has already been submitted. Please wait.");
    }
    if (button.name == "Submit") {
      if (document.AddIssue.short_descr.value == "") {
        alert("You must enter a title for the issue");
        return;
      }
      if (document.AddIssue.description.value == "") {
        alert("You must enter a description for the issue");
      }
    }
  }
}
```

```
        return;
    }
    document.AddIssue.statevar.value = "INSERT";
    button.value = "Submitted";
    document.AddIssue.submit();
}
}

</script>
<body bgcolor="#FFFFFF">
  <p><i><font color="#0000FF" size="+1"><b>Report a New Issue to
MyCo</b></font>
  </i></p>
  <p>Please complete this form to submit your issue. Your issue will
be entered
  automatically in our support system and you will receive a response
from us. <br>
  <hr>
  <br>
  <form name="AddIssue" ACTION="http://myco.extraview.net
/myco/ExtraView/ev_api.action"
  METHOD="GET">
  <INPUT NAME="statevar" TYPE="HIDDEN" VALUE="INSERT">
  <INPUT NAME="status" TYPE="HIDDEN" VALUE="SUBMIT">
  <INPUT NAME="assigned_to" TYPE="HIDDEN" VALUE="JIM.SMITH">
  <INPUT NAME="product_name" TYPE="HIDDEN" VALUE="CUSTOMER_ISSUES">
  <table border="0" cellpadding="2">
    <tr>
      <td width="220" valign="top">
        <div align="right">Enter title</div>
      </td>
      <td valign="top" width="625">
        <input type="text" name="short_descr" size="56"
maxlength="255">
      </td>
    </tr>
    <tr>
      <td width="220" valign="top">
        <div align="right">Enter description</div>
      </td>
      <td valign="top" width="625">
        <TEXTAREA WRAP="virtual" NAME="description" COLS=50 ROWS=4>
</TEXTAREA>
      </td>
    </tr>
    <tr>
      <td width="220" valign="top">
        <div align="right">Your name </div>
      </td>
      <td valign="top" width="625">
        <input type="text" name="customer_name" size="40"
maxlength="40">
      </td>
    </tr>
  </table>
</form>
</body>
</html>
```

```
</tr>
<tr>
  <td width="220" valign="top">
    <div align="right">Your email address</div>
  </td>
  <td valign="top" width="625">
    <input type="text" name="customer_email" size="40"
maxlength="40">
  </td>
</tr>
<tr>
  <td width="220" valign="top">
    <div align="right">Your phone number</div>
  </td>
  <td valign="top" width="625">
    <input type="text" name="customer_phone" size="40"
maxlength="40">
  </td>
</tr>
<tr>
  <td width="220" valign="top">
    <div align="right"></div>
  </td>
  <td valign="top" width="625">
  </td>
</tr>
<tr>
  <td width="220" valign="top">
    <div align="right"></div>
  </td>
  <td valign="top" width="625">
    <input type="button" name="Submit" value="Submit"
onClick="setState(this);">
  </td>
</tr>
</table>
<br>
<br>
<hr>
Copyright © 2002 ExtraView Corporation<br>Powered by ExtraView
</form>
</body>
</html>
```

Next, we want to design a web page that will allow the user to search for an issue, either by the ID or by keywords. We are setting up this page to only search for OPEN issues related to a product named OUR_PROD. The page will look like this:

Search For Existing Issues

This form is used to search MyCo's knowledge base for existing issues. Either enter an issue number to search for a specific problem, or enter one or more keywords to search the entire database for open issues with the keywords.

Search for an Issue #

Search for keywords

Copyright © 2020 ExtraView Corporation

The source to this page is as follows:

```
<html>
<head>
  <title>Search the MyCo Knowledgebase</title>
  <meta http-equiv="Content-Type" content="text/html; charset=iso-8859-1">
</head>
<script>
  function search1(button) {
    document.SearchForm1.submit();
  } function search2(button) {
    document.SearchForm2.submit();
  }
</script>

<body bgcolor="#FFFFFF">
  <<i><font color="#0000FF" size="+1"><b>Search For Existing Issues</b></font>
</i></p>
  <p>This form is used to search MyCo's knowledge base for existing issues. Either
  enter an issue number to search for a specific problem, or enter one or more keywords
  to search the entire database for open issues with the keywords.<br></p>
  <hr><br>

  <form name="SearchForm1" ACTION="http://myco.extraview.net/myco/ExtraView
/ev_api.action" METHOD="GET">
    <INPUT NAME="statevar" TYPE="HIDDEN" VALUE="SEARCH">
    <INPUT NAME="p_PAGE_LENGTH" TYPE="HIDDEN" VALUE="10">
    <INPUT NAME="p_RECORD_START" TYPE="HIDDEN" VALUE="1">
    <INPUT NAME="p_TEMPLATE_FILE" TYPE="HIDDEN" VALUE="file.html">

    <table width="100%" border="0" cellpadding="2">
      <tr valign="middle">
        <td width="30%">
          <div align="right">Search for an Issue #</div>
        </td>
        <td>
          <input type="text" name="p_id" size="50" maxlength="6">
          <input type="button" name="Submit2" value="Search" onClick="search1(this)">
        </td>
      </tr>
    </table>
  </form>
  <br><hr><br>
  <form name="SearchForm2" ACTION=http://myco.extraview.net/myco/ExtraView/ev_api.action
METHOD="GET">
    <INPUT NAME="user_id" TYPE="HIDDEN" VALUE="guest">
    <INPUT NAME="password" TYPE="HIDDEN" VALUE="guest">
```

```

<INPUT NAME="statevar" TYPE="HIDDEN" VALUE="SEARCH">
<INPUT NAME="product_name" TYPE="HIDDEN" VALUE="OUR_PROD">
<INPUT NAME="status" TYPE="HIDDEN" VALUE="OPEN">
<INPUT NAME="p_PAGE_LENGTH" TYPE="HIDDEN" VALUE="100">
<INPUT NAME="p_RECORD_START" TYPE="HIDDEN" VALUE="1">
<INPUT NAME="p_TEMPLATE_FILE" TYPE="HIDDEN" VALUE="file.html"> <table width="100%"
border="0" cellpadding="2">
  <tr valign="middle">
    <td width="30%">
      <div align="right">Search for keywords</div>
    </td>
    <td>
      <input type="text" name="p_keyword" size="50" maxlength="255">
      <input type="button" name="Submit" value="Search" onClick="search2(this)">
    </td>
  </tr>
</table> <hr> Copyright © 2002 ExtraView Corporation<br>
Powered by ExtraView<br>
</form> </body> </html>

```

Server-side HTML Templates

In order that the search will return neatly formatted HTML in the same style as the rest of your web site, you will create a server-side ExtraView template. Note the parameter in the source file named `p_template_file` that points to the template. For example, we want to return from the search a report that looks as follows:

Id	15829
Title	Areas and projects fields need to support a display_type of tab
Product	ExtraView
Description	On add-edit and any search screens, the area (or project) field must support 'tab' view.
Comments	Michael Stebbins: 1/24/02 Noticed on the XYZ site that this did not work.
Id	15802
Title	>32k of data is not being displayed for log area fields
Product	ExtraView
Description	If you add >32k of text to a log area the issue will update fine and the data is saved in the db...but it is not displayed on the screens. Look at the UI in arthur..issue 10004 and then look in the DB in the problem_text table.
Comments	
Id	15798
Title	Area is being saved on add screen but project is not
Product	ExtraView
Description	If you have areas and projects enabled, upon returning to the add screen the Area is preselected but the project is not and a blank list is displayed. The only way to re-populate the project is to re-select an area.
Comments	Udele Malabanan: 1/22/02 In QA, you have area and project in the layout but they are disabled in the application defaults, this is why it is not working. If the problem area and project are not being saved when entered through the CLI when the defaults are enabled, the code will need to be modified.

The source of the template file is as follows:

```
<TABLE cellpadding="2" cellspacing="2" border="1" bordercolor="#FFCCCC">
  <TR valign="top" bgcolor="#CCCCFF">
    <TD align="right" width=80>Defect #</TD>
    <TD width=800>__ID__</TD>
  </TR>
  <TR valign="top">
    <TD align="right">Title</TD>
    <TD>__SHORT_DESCR__</TD>
  </TR>
  <TR valign="top">
    <TD align="right">Product</TD>
    <TD>__PRODUCT_NAME__</TD>
  </TR>
  <TR valign="top">
    <TD align="right">Description</TD>
    <TD>__DESCRIPTION_TEXT__</TD>
  </TR>
  <TR valign="top">
    <TD align="right">Comments</TD>
    <TD><b>__COMMENTS_USER__</b>: __COMMENTS_TIMESTAMP__</b> <br> __COMMENTS_TEXT__ </TD>
  </TR>
</TABLE>
```

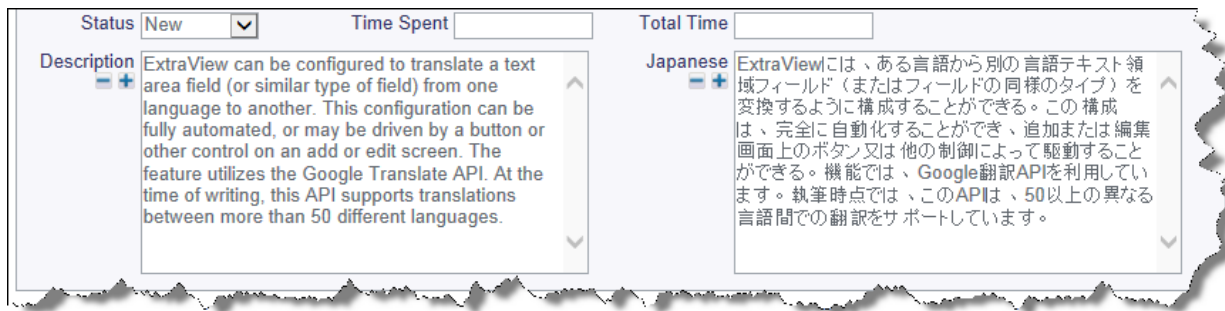
Note that server-side templates do not need to contain HTML. For example, if you want to output straight text for a CLI command such as `evsearch`, then a server-side template can be defined in exactly the same manner as for the HTML templates. For more information on server-side templates, please click [here](#).

Automatic Language Translation

ExtraView can be configured to translate a text area field (or similar type of field) from one language to another. This configuration can be fully automated, or may be driven by a button or other control on an *add* or *edit* screen. The feature utilizes the [Google Translate API](#). At the time of writing, this API supports translations between more than 50 different languages.

The Google Translate API version 2 is only available from Google as a paid service and is no longer free of charge (version 1 was a free service). ExtraView provides seamless access to the service, but it is your responsibility to purchase and maintain the service from Google. At the time of writing the cost of using the service is \$20 USD per 1 million characters translated from one language to another.

When you or your company subscribes to the service, Google provides you with a unique key that must be embedded into a method within the ExtraView `UserJavaScript.js` file. The functions within the `UserJavaScript.js` file may also be customized to provide the work flow needed. This page shows a typical implementation, but with a little additional work in JavaScript, this feature may be used in a whole variety of different ways. The example shows how to translate a text area field from English to Japanese automatically when the field containing the English text is modified.



The ExtraView behavior setting named `ENABLE_GOOGLE_LANGUAGE_API` must be set to a value of `YES` to enable the feature. This provides the infrastructure within the `add` and `edit` screens to support the translations. Note that all users must have Internet access to reach the Google server to use this feature.

For this example, we are assuming that we will enter or modify text in the `DESCRIPTION` field, and place the translated results into a field named `TRANSLATE_RESULTS`. The logic is controlled by two JavaScript functions placed in the `UserJavaScript.js` file. Follow these steps to configure:

- Turn the behavior setting named `ENABLE_GOOGLE_LANGUAGE_API` to `YES`
- ExtraView has a function in the `UserJavaScript.js` file named `ev_translate`. The default looks like this:

```
/**
 * The ev_translate function is used to call the translateText callback function to
 * perform the translation of the DESCRIPTION field from one language to another.
 * This call is initiated via an HTML modifier created as an onchange layout cell
 * attribute on the field to be translated.
 * For example: ev_translate('en', 'ja') will translate the contents of the
 * DESCRIPTION field from English to Japanese and place the results in the field
 * TRANSLATE_RESULT.
 *
 * You can modify this function to work with other fields or to work with a list
 * of languages.
 *
 * The ev_translate function uses the Google API translation service. This is not
 * a free service and each customer should obtain a license and their own KEY_VAL
 * from Google (see https://developers.google.com/translate/).
 *
 * Google and ExtraView Corp. make the following disclaimer if your company
 * utilizes the Google API translation service:
 *
 * THIS SERVICE MAY CONTAIN TRANSLATIONS POWERED BY GOOGLE. GOOGLE AND EXTRAVIEW
 * CORP. DISCLAIM ALL WARRANTIES RELATED TO THE TRANSLATIONS, EXPRESS OR IMPLIED,
 * INCLUDING ANY WARRANTIES OF ACCURACY, RELIABILITY, AND ANY IMPLIED WARRANTIES
 * OF MERCHANTABILITY, FITNESS FOR A PARTICULAR PURPOSE AND NONINFRINGEMENT.
 */
function ev_translate(from_lang, to_lang) {
    // WARNING: The API-KEY may be viewable by your users.
    // Restrict your key to designated domains or use a proxy to hide your key to
    // avoid misuse by other parties. Alter API-KEY to the value of the key
    // provided by Google when you license the Google Translate API.
    var key          = 'API-KEY';
    var newScript    = document.createElement('script');
    var d            = document.editForm;
    var url          = 'https://www.googleapis.com/language/translate/v2';
    newScript.type   = 'text/javascript';
    var sourceText   = escape(d.p_description.value);
    var source       = url + '?key=' + key + '&source=' + from_lang + '&target=' +
```

```

        to_lang + '&callback=translateText&q=' + sourceText;
newScript.src = source;

// When we add this script to the head, the request is sent off.
document.getElementsByTagName('head')[0].appendChild(newScript);
}

```

This function may be modified, for example to alter the names of the fields being referenced or to define a different structure for the two languages being referenced. For example, you might want to trigger the language for the result to be selected from a list.

- The second function in UserJavaScript.js provides the call back processing from the Google API. It is provided as:

```

function translateText(response) {
  try {
    var d = document.editForm;
    var xlat = response.data.translations[0].translatedText;
    d.p_translate_result.value = xlat;
  } catch (err) {
    d.p_translate_result.value = 'Error from Google API: ';
    d.p_translate_result.value += response.error.message;
  }
}

```

Again, significant modification may be made to this function. The example here simply translates the text returned from the Google Translate API and places the result in the TRANSLATE_RESULT field.

- Make sure you place the DESCRIPTION and the TRANSLATE_RESULT fields on the layouts where they are to be used and make sure that they have read and write permission
- To trigger the translation, you create an HTML modifier on the DESCRIPTION field within the *add* or *edit* screens where you want to use the feature. This example simply looks for a change in the content to trigger the translation:

```
onchange=ev_translate('en', 'ja');
```

This HTML modifier translates the text within the DESCRIPTION field from English to French and places the translated text within the TRANSLATE_RESULT field.

add_attachment

This action uploads a file from the local file system to be attached to an existing record in ExtraView. It is designed to be used within an HTML form. Note that the syntax and usage of this command is different to other API commands; extra care should therefore be taken when using the add_attachment command.

SYNTAX

```

<FORM METHOD="post" action=http://www.myserver.com/dev/ExtraView/ev_api.action?
user_id=username
&password=password
&statevar=add_attachment
&p_template_file=template_filename

```

```
[&strict=no | yes]
[&access_token=token-value]
>
```

This command must have additional parameters that are not part of the FORM tag, but are part of the HTML within the <form> </form> construct. These will be provided as part of the INPUT tags within the form. The INPUT tags that must be provided are:

Tag name	Purpose
p_id	The issue ID
p_attach_desc	The description of the attachment
file	The filename of the attachment

The following example shows how this API command is used from within an HTML form. The example includes the use of a template file that formats the results returned from ExtraView.

Adding an attachment from an HTML page

```
<html>
<title>Add an attachment to an existing issue</title>
<body>
<form method="POST"
  action="http://myserver.extraview.net/dev/ExtraView/ev_api.action?
  statevar=add_attachment&p_template_file=attach_results.html&p_id=12345"
  enctype="multipart/form-data">
<input type="hidden" name="p_id" value="12345">
<table>
<tr>
<td>Description</td>
<td><input type="text" size="40" name="p_attach_desc"></td>
</tr>
<tr>
<td colspan="2">Add attachment</td>
</tr>
<tr>
<td>Filename</td>
<td><input type="file" size="40" name="file"></td>
</tr>
<tr>
<td colspan="2"><input type="submit" value="Add Attachment"> </td>
</tr>
</table>
</form>
</body>
</html>
```

Note that if you are using a template file to return the results of the command, you must include the parameter named p_id twice within the HTML, once within the <form ...> tag, and once as a hidden field within the <INPUT ...> tag. This is because of the limitations of how browsers work with multi-part forms.

attach_results.html template file

This file must reside in the WEB-INF/user_templates directory. Please see the page on [server-side templates](#) for a fuller explanation. Carefully note the following in the example file. The following fields are available as tags within the template.

You will see in the example that there is a `__REPEAT_START__`, `__REPEAT_STOP__` block. This allows the display of all attachments added to the issue, with the one just added being the first in the list. If you only want to see the details of the attachment you just added, you can remove the `__REPEAT_START__` and `__REPEAT_STOP__` statements.

```
<html>
<title> Attachment added to ExtraView </title>
<body>
<p>Attachment added successfully to issue # __ID__ </p>
<br>
A list of all attachments held in the issue is as follows
<br><br>
<table>
<tr>
<td>File name</td>
<td>Description</td>
<td>File size</td>
<td>Created By</td>
<td>Date Created</td>
</tr>
__REPEAT_START__
<tr>
<td>__FILE_NAME__ </td>
<td>__ATTACH_DESC__ </td>
<td>__FILE_SIZE__ </td>
<td>__CREATED_BY_USER__ </td>
<td>__DATE_CREATED__ </td>
</tr>
__REPEAT_STOP__
</table>
<br>
</body>
</html>
```

NOTES

- This command uses a different syntax to most other commands within the API. This is to allow ExtraView to handle the multi-part form, used for uploading files to the server
- You can upload and attach the same file multiple times to a single record within ExtraView
- There are no limits to the number of files that can be attached to a single record
- Each file uploaded can be up to 4 GB in size
- The syntax of this command is likely to change with future versions of ExtraView, to be consistent with the same action structure as other commands
- The optional parameter `strict`, with a value of `yes`, enforces the action to operate only on `ALT_ID`. If there is no match for the value of the `ALT_ID` in the specified ID parameter, then the message

Invalid Id will be returned. This means that a matching ID value will be ignored

- The optional `access_token` parameter allows you to use a valid OAuth2 token obtained with the `get_token` command. If you provide the `access_token` parameter, then the `user_id` and `password` parameters should not be provided. This prevents the password being sent in clear text over your network connection.

Tag name	Purpose
<code>__ATTACH_DESC__</code>	The description of the file that was attached
<code>__ATTACHMENT_ID__</code>	The internal ID of the attachment. Typically not useful for external purposes
<code>__CREATED_BY_USER__</code>	The user who added the attachment
<code>__DATE_CREATED__</code>	The date the attachment was created
<code>__ID__</code>	The ID of the issue to which the attachment was added
<code>__FILE_NAME__</code>	The filename of the file attached
<code>__FILE_SIZE__</code>	The size, in bytes, of the attached file
<code>__NFILES__</code>	The total number of files attached to the issue

add_field_list

This action provides a list of all the available fields to the user in a specific order that is used by the layout for adding new issues within ExtraView. Most typically, this script is used to provide a list of fields and their titles for inclusion in a Perl script that is used to insert a new record within the ExtraView database. This action is used as a basis of the CLI `evadd` command. Note that all of the ExtraView security is in force and an individual user will only see the fields to which he has access. Also, note that there is no difference in the way that User Defined Fields (UDF's) are shown from other fields. UDF's are handled in a seamless way within the API.

SYNTAX

```
http://www.myserver.com/evj/ExtraView/ev_api.action?
user_id=username
&password=password
&statevar=add_field_list
[&include_images=1]
[&access_token=token-value]
```

This will return a list of fields as shown in the following figure. Note that the fields will vary according to your permissions and the fields defined in your installation.

```
RESOLUTION Disposition
CUSTOMER Customer
+SHORT_DESCR Title
```



```

ALT_ID Alt ID
+PRODUCT_NAME Product
PRIORITY Priority
+CATEGORY Category
SEVERITY_LEVEL Severity
ASSIGNED_TO Assigned To
OWNER Owner
COMPONENT Component
TEST_CASE_ID Test Case ID
TEST_CASE_LOCATION Test Case Location
PLATFORM Platforms
OS OS
PRIVACY View
*WORKAROUND Workaround
*RELEASE_NOTES Release Notes
+*DESCRIPTION Description

```

NOTES

- The general form of each entry returned by the command is:

```
<prefix><fieldName><delimiter><fieldTitle><delimiter><parentName>
```

where the `parentName` is blank or the immediate parent in an allowed-value or database-type relationship and the `delimiter` is that specified in the behavior setting named `DEFAULT_TEXT_REPORT_DELIMITER` and the characters in the prefix have the following meaning:

~ means the field is part of a repeating row layout
 * means the field has a display type of `textarea` or `logarea`
 % means the field has a display type of `user`

- The parameter `include_images` is optional. If provided, it always has a value of 1. When the parameter is provided, fields with a display type of `image` are included in the results returned
- The optional `access_token` parameter allows you to use a valid OAuth2 token obtained with the `get_token` command. If you provide the `access_token` parameter, then the `user_id` and `password` parameters should not be provided. This prevents the password being sent in clear text over your network connection.

add_udf_list

This command inserts new list values into existing user defined list type fields.

SYNTAX

```

http://www.myserver.com/evj/ExtraView/ev_api.action?
user_id=username
&password=password
&statevar=add_udf_list
&udf_name=my_field
&udf_values=val
&access_token=token-value

```

To add more than one list value with a single API command, you need to have encoded the *tab* character separator in your API command.

EXAMPLE

This example adds *xxx*, *yyy* and *zzz* as values to a UDF named *my_field*.

```
http://www.myserver.com/evj/ExtraView/ev_api.action? user_id=username&password=password
&STATEVAR=add_udf_list&UDF_NAME=my_field &UDF_VALUES=xxx%09yyy%09zzz
```

NOTES

The optional `access_token` parameter allows you to use a valid OAuth2 token obtained with the `get_token` command. If you provide the `access_token` parameter, then the `user_id` and `password` parameters should not be provided. This prevents the password being sent in clear text over your network connection.

add_user_to_group

This action adds an existing user to an existing user group.

SYNTAX

```
http://www.myserver.com/evj/ExtraView/ev_api.action?
user_id=username
&password=password
&statevar=add_user_to_group
&security_user_id=userID
&user_group=userGroup
[&access_token=token-value]
```

NOTES

- You must provide both an existing user and an existing user group
- The command will fail if you pass a name other than `security_user_id` or `user_group`
- The command will fail if the user is already a member of the user group
- You must have update permission to the security key named `SE_SECURITY_GROUP` before you can execute the command
- The optional `access_token` parameter allows you to use a valid OAuth2 token obtained with the `get_token` command. If you provide the `access_token` parameter, then the `user_id` and `password` parameters should not be provided. This prevents the password being sent in clear text over your network connection.

allowed_list

This command retrieves a list of allowed values for a given parent key. For example, if modules (`MODULE_ID`) in your installation are dependent upon products (`PRODUCT_NAME`), then you can use this function to find all the valid modules for a given product. The command can also be used to retrieve

the values in a specified list only.

SYNTAX

```
http://www.myserver.com/evj/ExtraView/ev_api.action?  
user_id=username  
&password=password  
&statevar=allowed_list  
&field=field_name  
&parent=parent_field_name  
&parent_val=product_name  
[&access_token=token-value]
```

NOTES

Both the `field_name` and the `product_name` must exist else the command will fail. The delimiter of a colon (:) in the example is the system delimiter stored in the behavior setting named `DEFAULT_TEXT_REPORT_DELIMITER`. If you only specify the field without the parent and `parent_val`, the command will return a list of all the values of the field.

The optional `access_token` parameter allows you to use a valid OAuth2 token obtained with the `get_token` command. If you provide the `access_token` parameter, then the `user_id` and `password` parameters should not be provided. This prevents the password being sent in clear text over your network connection.

EXAMPLE

The following URL retrieves a list of modules for the product named WIDGET.

```
http://www.myserver.com/evj/ExtraView/ev_api.action? user_id=username &password=password  
&statevar=allowed_list &field=MODULE_ID &parent=PRODUCT_NAME &parent_val=WIDGET
```

This will produce output similar to the following:

```
1022:POWER_SUPPLY 1032:CASE 1203:MOTHERBOARD 1255:KEYBOARD 1334:MOUSE 1432:MONITOR
```

custom

This call invokes the CLI user exit in the `UserCustom` Java class.

SYNTAX

```
http://www.myserver.com/evj/ExtraView/ev_api.action?  
user_id=username  
&password=password  
&statevar=custom  
[&custom_param1=value[&custom_param1=value...]]  
[&access_token=token-value]
```

NOTES

This command works in conjunction with the UserCustom Java class within ExtraView. This command can be used to create your own API calls that execute any code within the ExtraView environment. It is therefore a very powerful command that can be used to create any new API command or commands that you need for any purpose. The custom parameters are optional and may be any name value pairs that you provide to the new command. The parameters are passed into the UserCustom CLI exit.

The optional `access_token` parameter allows you to use a valid OAuth2 token obtained with the `get_token` command. If you provide the `access_token` parameter, then the `user_id` and `password` parameters should not be provided. This prevents the password being sent in clear text over your network connection.

debug

This command sets or resets the internal debug level of messages being sent to ExtraView's log file.

SYNTAX

```
http://www.myserver.com/evj/ExtraView?DEBUG=nn
```

NOTES

The default level for `nn` is 6. Valid values are in the range 1 through 12. This command affects all users of ExtraView, no matter how they access the program (CLI, Web interface, API), and the higher the value, the more the performance of ExtraView is degraded for all users. In addition, considerable more information is written to the log with higher values of the debug level. Therefore, please ensure the level is set back to a maximum of 6 in your production environment, if you have altered it while testing scripts that you are developing.

delete

This action allows you to delete an existing record within ExtraView's database. Note that you must have permission to delete records before you can execute this action. The security key that controls this is named `PR_RESOLUTION.DELETE_BUTTON`.

SYNTAX

```
http://www.myserver.com/evj/ExtraView/ev_api.action?  
user_id=username  
&password=password  
&statevar=delete  
&p_template_file=file.html  
&id=nnnnn  
[&strict=no | yes]  
[&access_token=token-value]
```

If the issue is deleted without error, the function will return the issue number as shown below. Note that the term “Bug #” is dependent on the screen title used for the ID field in the data dictionary.

```
Bug # 12352 deleted.
```

NOTES

You must provide a valid name and value pair for the ID field. The value must be an existing issue within the ExtraView database. If you do not provide this, an error message is generated.

The optional parameter `strict`, with a value of `yes`, enforces the action to operate only on `ALT_ID`. If there is no match for the value of the `ALT_ID` in the specified ID parameter, then the message *Invalid Id* will be returned. This means that a matching ID value will be ignored.

The optional `access_token` parameter allows you to use a valid OAuth2 token obtained with the `get_token` command. If you provide the `access_token` parameter, then the `user_id` and `password` parameters should not be provided. This prevents the password being sent in clear text over your network connection.

delete_attachment

This action deletes an existing attachment from ExtraView. Deleting an attachment removes it from the current issue, but preserves a copy within the history of the issue.

SYNTAX

```
http://www.myserver.com/evj/ExtraView/ev_api.action?  
user_id=username  
&password=password  
&statevar=delete_attachment  
&attachment_id=nnnnn  
[&access_token=token-value]
```

NOTES

You must provide an existing `attachment_id`. You must have update permission to the security key named `PR_RESOLUTION.ATTACHMENT_DELETE` before you can execute the command.

The optional `access_token` parameter allows you to use a valid OAuth2 token obtained with the `get_token` command. If you provide the `access_token` parameter, then the `user_id` and `password` parameters should not be provided. This prevents the password being sent in clear text over your network connection.

delete_user

This action deactivates an existing user from ExtraView. **It does not delete the user record from the database.** This is because historic records contain references to users and their name must remain available for display.

SYNTAX

```
http://www.myserver.com/evj/ExtraView/ev_api.action?  
user_id=username  
&password=password  
&statevar=delete_user  
&security_user_id=userID  
[&access_token=token-value]
```

NOTES

You must provide an existing userID. The command will fail if you pass a name other than security_user_id. You must have update permission to the security key named SE_SECURITY_USER before you can execute the command.

The optional access_token parameter allows you to use a valid OAuth2 token obtained with the get_token command. If you provide the access_token parameter, then the user_id and password parameters should not be provided. This prevents the password being sent in clear text over your network connection.

edit_field_list

This action provides a list of all the available fields to the user in a specific order that is used by the layout for updating existing issues within ExtraView. Most typically this script is used to provide a list of fields and their titles for inclusion in a script that is used to update an existing record within ExtraView's database. This action is used as a basis of the CLI command evupdate. Note that all of ExtraView's security is in force and an individual user will only see the fields to which he has access. In addition, there is no difference in the way that User Defined Fields (UDF's) are shown compared to other fields. UDF's are handled in a seamless way within the API.

SYNTAX

```
http://www.myserver.com/evj/ExtraView/ev_api.action?  
user_id=username  
&password=password  
&statevar=edit_field_list  
[&include_images=1]  
[&access_token=token-value]
```

This will return a list of fields as shown in the following figure. Note that the fields will vary according to your permissions and the fields defined in your installation.

```
RESOLUTION Disposition  
CUSTOMER Customer  
+SHORT_DESCR Title  
ALT_ID Alt ID  
+PRODUCT_NAME Product  
PRIORITY Priority  
+CATEGORY Category  
SEVERITY_LEVEL Severity  
ASSIGNED_TO Assigned To  
OWNER Owner
```

COMPONENT Component
 TEST_CASE_ID Test Case ID
 TEST_CASE_LOCATION Test Case Location
 PLATFORM Platforms
 OS OS
 PRIVACY View
 *RELEASE_Notes Release Notes
 +*Description Description

NOTES

The general form of each entry returned by the command is:

```
<prefix><fieldName><delimiter><fieldTitle><delimiter><parentName>
```

where the `parentName` is blank or the immediate parent in an allowed-value or database-type relationship and the `delimiter` is that specified in the behavior setting named `DEFAULT_TEXT_REPORT_DELIMITER` and the characters in the prefix have the following meaning:

~ means the field is part of a repeating row layout

* means the field has a display type of `textarea` or `logarea`

% means the field has a display type of `user`

The parameter `include_images` is optional. If provided, it always has a value of 1. When the parameter is provided, fields with a display type of `image` are included in the results returned.

The optional `access_token` parameter allows you to use a valid OAuth2 token obtained with the `get_token` command. If you provide the `access_token` parameter, then the `user_id` and `password` parameters should not be provided. This prevents the password being sent in clear text over your network connection.

fields

This action provides a list of all the available fields to the user. Note that all of ExtraView's security is in force and an individual user will only see the fields to which he has access. Also note that there is no difference in the way that User Defined Fields (UDF's) are shown than other fields. UDF's are handled in a seamless way within the API.

SYNTAX

```
http://www.myserver.com/evj/ExtraView/ev_api.action?
user_id=username
&password=password
&statevar=fields
&include_fields=y
&select_list=field1 [,field2 [,fieldn]]
[&access_token=token-value]
```

NOTES

The `include_fields=y` is an optional name/value pair. If this is included then the output returned by the command will have the display type of each field returned, following the title of the field. This will return a list of fields similar to that shown in the following figure. Note that the fields will vary according to your permissions and the fields defined in your installation.

```
ASSIGNED_TO Assigned To
CATEGORY Category
COMPONENT Component
DATE_CLOSED Date Closed
DATE_CREATED Created
DAYS_IN_STATUS Days in Queue
DAYS_OPEN Days Open
ID Bug #
MONTHS_IN_STATUS Months In Status
MONTHS_OPEN Months Open
ORIGINATOR Originator
ORIGINATOR_NAME Originator
OS OS
OWNER Owner
PLATFORM Platforms
PRIORITY Priority
PRIVACY View
PRODUCT_NAME Product
RELEASE_FIXED Version Closed
RELEASE_FOUND Version Open
*RELEASE_NOTES Release Notes
RELEASE_STATUS Release Status
RESOLUTION Disposition
SEVERITY_LEVEL Severity
SHORT_DESCR Title
TIMESTAMP Last Modified
TIMESTAMP_MONTH Timestamp Month
TIMESTAMP_WEEK Timestamp Week
WEEKS_IN_STATUS Weeks In Status
WEEKS_OPEN Weeks Open
*WORKAROUND Workaround
```

The optional `select_list` parameter allows the entry of one or more field names. When this is provided, the data returned by the API call only provides the values for the fields in the list.

The optional `access_token` parameter allows you to use a valid OAuth2 token obtained with the `get_token` command. If you provide the `access_token` parameter, then the `user_id` and `password` parameters should not be provided. This prevents the password being sent in clear text over your network connection.

get

This API call retrieves an individual record from the ExtraView database. You must know the ID of the issue in question to be able to extract the information.

SYNTAX

```
http://www.myserver.com/evj/ExtraView/ev_api.action?
user_id=username
&password=password
&statevar=get
&id=nnnnn
```



```

&p_template_file=file.html
&username_display=ID | LAST | FIRST
&strict=no | yes
[&exclude_data_images=no | yes]
[&access_token=token-value]

```

The action retrieves a single record in XML format from the database and displays it similarly to the example shown in the following figure. Note that only fields to which the user has permission will be displayed. Also, note that it is possible to see repeating fields such as version records within the output.

```

<?xml version="1.0"?>
<PROBLEM_RECORD>
<ID TITLE="Bug #">12621</ID>
<SHORT_DESCR TITLE="Title"><![CDATA[An error occurs when you overload the power
converter]]></SHORT_DESCR>
<SEVERITY_LEVEL TITLE="Severity">High</SEVERITY_LEVEL>
<PRIORITY TITLE="Priority">Low</PRIORITY>
<PRODUCT_NAME TITLE="Product">NetPower</PRODUCT_NAME>
<DATE_CREATED TITLE="Created">14-AUG-01</DATE_CREATED>
<OWNER TITLE="Owner">rick</OWNER>
<TIMESTAMP TITLE="Last Modified">15-AUG-01</TIMESTAMP>
<ASSIGNED_TO TITLE="Assigned To">Florence</ASSIGNED_TO>
<PRIVACY TITLE="View">Private</PRIVACY>
<CATEGORY TITLE="Category">Hardware</CATEGORY>
<RESOLUTION TITLE="Disposition">Not found</RESOLUTION>
<DATE_CLOSED TITLE="Date Closed"></DATE_CLOSED>
<ORIGINATOR TITLE="Originator">JON.BJORNSTAD</ORIGINATOR>
<ORIGINATOR_NAME TITLE="Originator">Jon Bjornstad</ORIGINATOR_NAME>
<RELEASE_RECORD>
<RELEASE_FOUND TITLE="Version Open">ADC2</RELEASE_FOUND>
<RELEASE_FIXED TITLE="Version Closed">1.01</RELEASE_FIXED>
<RELEASE_STATUS TITLE="Release Status">Unassigned</RELEASE_STATUS>
</RELEASE_RECORD>
<RELEASE_RECORD>
<RELEASE_FOUND TITLE="Version Open">Framework 1.3</RELEASE_FOUND>
<RELEASE_FIXED TITLE="Version Closed">Framework 1.3</RELEASE_FIXED>
<RELEASE_STATUS TITLE="Release Status">Open</RELEASE_STATUS>
</RELEASE_RECORD>
<Description TITLE="Description"><![CDATA[If you enter an overload trip on the front
panel you will find an error occurs.]]></Description>
</PROBLEM_RECORD>

```

NOTES

You must provide a valid name and value pair for the ID field. The value must be an existing issue within the ExtraView database. If you do not provide this, an error message is generated.

The optional parameter USERNAME_DISPLAY may be used to override the behavior setting named USERNAME_DISPLAY, for the duration of the execution of a single API call. This allows the developer to return the user names in a different format than the system-wide default.

The optional parameter strict, with a value of yes, enforces the action to operate only on ALT_ID. If there is no match for the value of the ALT_ID in the specified ID parameter, then the message *Invalid Id* will be returned. This means that a matching ID value will be ignored.

The fields returned in the results correspond to the fields on the detailed report layout of the user's current

business area, current project and current role. However, if the behavior setting named `REPORT_DTL_ITEM_DATA_LAYOUT` is set to `YES`, then the detailed report for the user's current role and the issue's business area and project are used to define the fields being returned.

If the data returned includes an image, the data for the image will be base 64 encoded. However, the optional parameter `exclude_data_images` will inhibit images embedded within HTML Area fields from being output, if set to a value of `yes`.

The optional `access_token` parameter allows you to use a valid OAuth2 token obtained with the `get_token` command. If you provide the `access_token` parameter, then the `user_id` and `password` parameters should not be provided. This prevents the password being sent in clear text over your network connection.

get_areas

This action retrieves a list of areas that exist within the ExtraView database. For a full explanation of areas, please consult the [Administration Guide](#).

SYNTAX

```
http://www.myserver.com/evj/ExtraView/ev_api.action?  
user_id=username  
&password=password  
&statevar=get_areas  
[&access_token=token-value]
```

NOTES

The delimiter of a colon (:) in the example is the system delimiter stored in the behavior setting named `DEFAULT_TEXT_REPORT_DELIMITER`. The currently selected area for the user who is executing the command, in their current role is marked with an asterisk (*). Sample return from the `get_areas` function:

```
*0:(default values)  
3:Customer  
23:Project  
43:Incident
```

The optional `access_token` parameter allows you to use a valid OAuth2 token obtained with the `get_token` command. If you provide the `access_token` parameter, then the `user_id` and `password` parameters should not be provided. This prevents the password being sent in clear text over your network connection.

get_attachment

This action downloads a file attached to an existing record in ExtraView to the local file system.

SYNTAX

```
http://www.myserver.com/evj/ExtraView/ev_api.action?  
user_id=username  
&password=password  
&statevar=get_attachment  
&attachment_id=nnnnn  
[&access_token=token-value]
```

NOTES

You can retrieve the filenames and attachment ID's with the command `list_attachment`. An example of this command is:

```
http://www.myserver.com/evj/ExtraView/ev_api.action?user_id=myuser&password=mypassword&  
statevar=list_attachment&id=10070
```

Generates this result:

```
2010-6-24.9.49.:UserJavaScript.js:3639:ExtraView:23:test:application/x-javascript
```

The optional `access_token` parameter allows you to use a valid OAuth2 token obtained with the `get_token` command. If you provide the `access_token` parameter, then the `user_id` and `password` parameters should not be provided. This prevents the password being sent in clear text over your network connection.

get_behavior_setting

This action retrieves the value of a behavior setting from ExtraView.

SYNTAX

```
http://www.myserver.com/evj/ExtraView/ev_api.action?  
user_id=username  
&password=password  
&statevar=get_behavior_setting  
&app_default_name=1  
[&access_token=token-value]
```

NOTES

You must provide the name of an existing behavior setting in the `get_behavior_setting` parameter name. The result of the function is:

```
app_default_name:app_default_value
```

where the delimiter `:` is the system delimiter stored in the behavior setting named `DEFAULT_TEXT_REPORT_DELIMITER`. The `=1` in the parameter list is a mechanism to provide a dummy value. The number 1 has no significance. For a full list of behavior settings and their uses, please consult the [Administration Guide](#).

The optional `access_token` parameter allows you to use a valid OAuth2 token obtained with

the `get_token` command. If you provide the `access_token` parameter, then the `user_id` and `password` parameters should not be provided. This prevents the password being sent in clear text over your network connection.

get_field_defaults

This action returns the data dictionary defaults for all data dictionary fields that have a default value set.

SYNTAX

```
http://www.myserver.com/evj/ExtraView/ev_api.action?  
user_id=username  
&password=password  
&statevar=get_field_defaults  
[&access_token=token-value]
```

NOTES

The information returned from this call is of the format:

```
field_name:default_value
```

One row of data is returned for each field in the data dictionary that has a default value.

The optional `access_token` parameter allows you to use a valid OAuth2 token obtained with the `get_token` command. If you provide the `access_token` parameter, then the `user_id` and `password` parameters should not be provided. This prevents the password being sent in clear text over your network connection.

get_fields

This API call retrieves specific fields from an individual record from the ExtraView database. You must know the ID of the issue in question to be able to extract the information.

SYNTAX

```
http://www.myserver.com/evj/ExtraView/ev_api.action?  
user_id=username  
&password=password  
&statevar=get_fields  
&username_display=ID | LAST | FIRST  
&id=nnnnn  
&status=1  
&priority=1  
&short_descr=1  
&comments=1  
[&all=yes]  
[ev_send_xml=true]  
[exclude_data_images=no | yes]
```

```
[&access_token=token-value]
```

The action retrieves only the fields requested from a single issue record in the database and displays the results with one field on each line. Note that only fields to which the user has permission will be displayed. Also, note that it is possible to see repeating fields such as version records within the output. The above command with the syntax given will return output similar to:

```
Configuring the XYZ module results in an error  
OPEN  
MEDIUM
```

NOTES

You must provide a valid name and value pair for the ID field. The value must be an existing issue within the ExtraView database. If you do not provide this, an error message is generated.

The values returned may not be returned in the same order as the parameters you provide.

The values returned are the NAMES or ID's of the fields set as parameters.

The =1 in the parameter list is a mechanism to provide a dummy value. The number 1 has no significance.

The optional parameter `username_display` may be used to override the behavior setting named `USERNAME_DISPLAY`, for the duration of the execution of a single API call. This allows the developer to return the user names in a different format than the system-wide default.

When retrieving log area display type fields, such as the `COMMENTS` field in the above example, there is an optional parameter, `all=yes`. When this is set, you will retrieve all the entries for the log area, not just the most recent one.

The optional `ev_send_xml` will send the response to the command in XML format.

If the data returned includes an image, the data for the image will be base 64 encoded. However, the optional parameter `exclude_data_images` will inhibit images embedded within HTML Area fields from being output, if set to a value of `yes`.

The optional `access_token` parameter allows you to use a valid OAuth2 token obtained with the `get_token` command. If you provide the `access_token` parameter, then the `user_id` and `password` parameters should not be provided. This prevents the password being sent in clear text over your network connection.

get_heartbeat

This API call provides an indication of the status of ExtraView.

SYNTAX

```
http://www.myserver.com/evj/ExtraView/ev_api.action?  
user_id=username  
&password=password
```

```
&statevar=get_heartbeat
[$access_token=token-value]
```

NOTES

The return from the server is XML, similar to the following:

```
<?xml version="1.0" encoding="UTF-8" ?>

<EV_HEARTBEAT>

<EV_STATUS>EXTRAVIEW ALIVE</EV_STATUS>

<DB_STATUS>DB CONNECTION CONFIRMED</DB_STATUS>

<DB_DATETIME>2003/09/11 11:33:22</DB_DATETIME>

<FREE_MEMORY>197</FREE_MEMORY>

<TOTAL_MEMORY>250</TOTAL_MEMORY>

<HEARTBEAT_EXEC_TIME>330</HEARTBEAT_EXEC_TIME>

<TASK_INFO TASK=task name>

<NODE_ID>node name</NODE_ID>

<START_OPTION>start option</START_OPTION>

<TASK_STATE>task state</TASK_STATE>

<POLL_INTERVAL>poll interval
seconds</POLL_INTERVAL>

- [<THREAD_INFO>

<THREAD_STATE>thread state</THREAD_STATE>

<SECS_SINCE_EXECUTION>seconds since last execution

[<PRIORITY>thread priority</PRIORITY> ]

</THREAD_INFO>] </TASK_INFO>

</EV_HEARTBEAT>
```

In the above, the section on task information is repeated for each configured task on the application server. The returned information includes:

task name	name of the background task, e.g., SESSION_MONITOR, TASK_CONTROL_TASK, BATCHMAIL, etc.
node name	name of the node hosting the evapi service
start option	START_NOW, STOP_NOW, START_ON_BOOT, or none

task state	STARTED, STOPPED, or ERROR
poll interval seconds	the (minimum) number of seconds between polled executions
thread state	running or stopped
seconds since last execution	number of seconds since the task was most recently scheduled to run
thread priority	the priority of the thread (using Java thread priority values) -- may not appear in output

The return indicates not only that ExtraView is alive, but also it confirms that a database connection could be made, that the ExtraView servlet is running on the application server, and that the web server is running.

Note that the tag named `DB_DATETIME` and its value provide the current timestamp of the database server. This can be useful to provide local client applications with the server time of the host ExtraView application.

The amount of free memory, the total memory and the amount of time the command took to execute are also returned.

This command can be placed in a script that is run at routine intervals to provide an indication of the health of the system. Not only can confirmation be made that the system is alive, but the time to execute the command is available

The optional `access_token` parameter allows you to use a valid OAuth2 token obtained with the `get_token` command. If you provide the `access_token` parameter, then the `user_id` and `password` parameters should not be provided. This prevents the password being sent in clear text over your network connection.

get_list_projects

This API action is a variant of the `get_projects` API call, which will be used for most purposes. The `get_list_projects` command adds the capability to execute user custom code that has been defined. The command makes a call to the 5-parameter version of `frSelectListuser` custom callout to allow for filtering of the project list returned to the user from the command.

SYNTAX

```
http://www.myserver.com/evj/ExtraView/ev_api.action?  
user_id=username  
&password=password  
&statevar=get_list_projects  
&area_id=nn  
[&access_token=token-value]
```

NOTES

To provide further refinements with this API command, it is protected by a security permission key named `CF_GET_PROJECTS_API`. If the user's current role does not have read permission to this key, the user

custom exit will see an exception.

The value of the `area_id`, `nn`, must exist in the database, else the command will fail.

The asterisk (*) in the return shows the currently selected project.

The delimiter ‘:’ in the example is the system delimiter stored in the application default named `DEFAULT_TEXT_REPORT_DELIMITER`.

Sample return from the `get_list_projects` function:

```
*0:(default values)
1:Customer Projects
2:Internal Projects
3:Documentation
4:Marketing Requirements
```

The optional `access_token` parameter allows you to use a valid OAuth2 token obtained with the `get_token` command. If you provide the `access_token` parameter, then the `user_id` and `password` parameters should not be provided. This prevents the password being sent in clear text over your network connection.

get_log

This command returns the contents of the ExtraView application server log.

SYNTAX

```
http://www.myserver.com/evj/ExtraView/ev_api.action?
user_id=username
&password=password
&statevar=get_log
[&access_token=token-value]
```

NOTES

ExtraView makes a check to ensure that the user requesting the log has administrative privileges, as indicated by the behavior setting named `ADMIN_BYPASS_GROUP` being one of the user roles that the user may adopt. If the user does not have this access, they will not be able to execute this command successfully.

The output from this command may be substantial in size.

The optional `access_token` parameter allows you to use a valid OAuth2 token obtained with the `get_token` command. If you provide the `access_token` parameter, then

the `user_id` and `password` parameters should not be provided. This prevents the password being sent in clear text over your network connection.

get_projects

This action retrieves a list of projects that exist within an area in the ExtraView database. For a full explanation of areas and projects, please consult the [Administration Guide](#).

SYNTAX

```
http://www.myserver.com/evj/ExtraView/ev_api.action?  
user_id=username  
&password=password  
&statevar=get_projects  
&area_id=nn  
[&access_token=token-value]
```

NOTES

The value of the `area_id`, `nn`, must exist in the database, else the command will fail.

The asterisk (*) in the return shows the currently selected project. The delimiter ':' in the example is the system delimiter stored in the application default named `DEFAULT_TEXT_REPORT_DELIMITER`.

Sample return from the `get_projects` function:

```
*0:(default values)  
1:Customer Projects  
2:Internal Projects  
3:Documentation  
4:Marketing Requirements
```

The optional `access_token` parameter allows you to use a valid OAuth2 token obtained with the `get_token` command. If you provide the `access_token` parameter, then the `user_id` and `password` parameters should not be provided. This prevents the password being sent in clear text over your network connection.

get_reports

This function retrieves a list of available reports for a given user.

SYNTAX

```
http://www.myserver.com/evj/ExtraView/ev_api.action?
```

```

user_id=username
&password=password
&statevar=get_reports
[&access_token=token-value]

```

NOTES

The delimiter ‘:’ in the example is the system delimiter stored in the behavior setting named `DEFAULT_TEXT_REPORT_DELIMITER`.

The typical use of this command is to retrieve a list of available shared and private reports, to present these as a menu and allow the user to select which report he is going to run with the `run_report` function.

There are two main sections returned, a list of **private:** and a list of **public:** reports

The optional `access_token` parameter allows you to use a valid OAuth2 token obtained with the `get_token` command. If you provide the `access_token` parameter, then the `user_id` and `password` parameters should not be provided. This prevents the password being sent in clear text over your network connection.

Within each of these sections, each report is shown with four values, separated by the `DEFAULT_TEXT_REPORT_DELIMITER` and specified as:

1. Report ID – a numeric identifier for the report
2. Title – the title of the report
3. Type – One of the following types:

Type	Purpose
<code>ADMIN_REPORT</code>	Admin Report
<code>ADVANCED</code>	Column report with advanced filters
<code>AGING</code>	Aging reports with standard filters
<code>AGING_ADV</code>	Aging reports with advanced filters
<code>CALENDAR</code>	Calendar report with standard filters
<code>CALENDAR_ADV</code>	Calendar report with advanced filters
<code>CHART</code>	Charts with standard filters
<code>CHART_ADV</code>	Charts with advanced filters
<code>CONTAINER</code>	Container reports
<code>CUSTOMURL</code>	Custom URL report with standard filters
<code>CUSTOMURL_ADV</code>	Custom URL report with advanced filters
<code>DASHBOARD</code>	Dashboard report
<code>DETAILED</code>	Detailed reports

GEOSPATIAL	Geospatial reports with standard filters
GEOSPATIAL_ADV	Geospatial reports with advanced filters
MATRIX	Matrix report with standard filters
MATRIX_ADV	Matrix report with advanced filters
PAGE_LAYOUT_CHR	Page Layout chart
PAGE_LAYOUT_COL	Page Layout Column report
PAGE_LAYOUT_DGB	Page Layout Double Group By report
PAGE_LAYOUT_SGB	Page Layout Single Group By report
PLANNING_ADV	Planning report with advanced filters
QUICKLIST	QuickList reports
STANDARD	Column reports with standard filters
SUMMARY	Summary reports with standard filters
SUMMARY_ADV	Summary reports with advanced filters
TASKBOARD	Taskboard reports with standard filters
TASKBOARD_ADV	Taskboard reports with advanced filters
TREEGRID	Treegrid reports with standard filters
TREEGRID_ADV	Treegrid reports with advanced filters

Sample return from the get_reports function:

private:

```
169:All Features Requests:STANDARD:That are open
94:Bugs I Fixed in January:STANDARD:Bugs not Closed Yet
99:Bugs Open By Month:CHART:For Tracker Enterprise
401:Build
30:STANDARD:Estimated versus Actual Time
89:My Hot Llist:STANDARD:Priority 1 issues that are not closed
73:Open and Fixed Defects:CHART:Year to Date
114:Owners of open bugs:STANDARD:Sorted by owner
119:Report of Open issues:STANDARD:By Bill
109>Status of Bugs Reported:CHART:Over all bugs public:
144:Bug Trend Report:CHART:Open vs. Fixed Issues
```

391:Bugs:AGING:Aging of all bugs that are not closed

4:Bugs - Assigned to you:SUMMARY:Issues assigned by product

164:Bugs - List of Closed Issues:STANDARD:Ordered by Product

68:Bugs - No Reproducible State:STANDARD:Open Issues

386:Customer Issues:AGING:Aging of all issues

43:Customer Issues:STANDARD:New Issues By Priority

48:Customer Issues:STANDARD:Open Issues By Priority

249:Customer Issues - Time Spent:STANDARD:Items fixed

58:Feature Requests:SUMMARY: Requests By Product and Category

239:Helpdesk Issues:STANDARD:New / Open Issues Assigned to Me

234:Helpdesk Issues:ADVANCED:Open Issues

209:Knowledge Base:ADVANCED:Published Articles

214:Knowledge Base:ADVANCED:Unpublished Articles

79:My Open Issues:STANDARD:for Home Page

33:Open P1 Issues:STANDARD:All Areas - Ordered by Assigned To

3:Originated by you:SUMMARY:Issues originated by you

63:QA List - Fixed Defects:STANDARD:Ordered by Priority

84:Summary of All Issues:CHART:Chart of All Statuses

53:Summary of Open Customer Issues:SUMMARY_ADV:By Product

get_roles

This action retrieves a list of available roles for a given user.

SYNTAX

```
http://www.myserver.com/evj/ExtraView/ev_api.action?  
user_id=username  
&password=password  
&statevar=get_roles  
[&access_token=token-value]
```

NOTES

The delimiter ‘:’ in the example is the system delimiter stored in the application default named `DEFAULT_TEXT_REPORT_DELIMITER`.

The asterisk (*) indicates the current role of the user.

Sample return from the `get_roles` function:

```
ENGINEERING:Engineering
```

```
*QA:Quality Assurance
```

```
MNGMT:Management
```

```
ADMIN:Administrator
```

The optional `access_token` parameter allows you to use a valid OAuth2 token obtained with the `get_token` command. If you provide the `access_token` parameter, then the `user_id` and `password` parameters should not be provided. This prevents the password being sent in clear text over your network connection.

get_title

This action retrieves the title of a field from the ExtraView data dictionary, by providing its field name.

SYNTAX

```
http://www.myserver.com/evj/ExtraView/ev_api.action?  
user_id=username  
&password=password  
&statevar=get_title  
&dd_name=1  
[&access_token=token-value]
```

NOTES

You must provide the name of an existing database dictionary field in `dd_name`.

The =1 in the parameter list is a mechanism to provide a dummy value. The number 1 has no significance.

The result of the function is:

```
dd_name:title
```

where the delimiter : is the system delimiter stored in the behavior setting named `DEFAULT_TEXT_REPORT_DELIMITER`.

The optional `access_token` parameter allows you to use a valid OAuth2 token obtained with

the `get_token` command. If you provide the `access_token` parameter, then the `user_id` and `password` parameters should not be provided. This prevents the password being sent in clear text over your network connection.

get_token

This command retrieves a token from an ExtraView instance, in order that the token may be used in subsequent API calls without the need for these subsequent API calls to send the password in clear text. The protocol used to generate the token and to apply this is termed OAuth2. When a valid token is generated, it has an expiry date and time, based upon the value in the behavior setting named `OAUTH2_TOKEN_LIFETIME_SECONDS`. After the token expires, a new token must be requested, again using the `get_token` command. If an API request is made using an expired token, the server treats the call as an invalid sign on and access is refused.

SYNTAX

```
https://www.myserver.com/evj/ExtraView/ev_api.action?  
user_id=username  
&password=password  
&statevar=get_token  
[&ev_send_xml=false | true]
```

NOTES

The token is returned as plain text, unless the parameter `ev_send_xml` is set to `true`, in which case the token is returned within an XML format.

EXAMPLES

Example 1: Send the URL:

```
https://www.myserver.com/evj/ExtraView/ev_api.action?user_id=my_user_id&  
password=my_password&statevar=get_token
```

This returns:

```
Token:x3o4xNX8xYm4gRE5YrtLPq3Bybtav9Xao8VBI1oPtz8  
Type:Bearer  
Lifetime:3600  
Expiration Date:2020-07-02 18:39:48.818 -0700  
Scope:read write
```

Example 2: Send the URL:

```
https://www.myserver.com/evj/ExtraView/ev_api.action?user_id=bsmith&password=bill&  
statevar=get_token&ev_send_xml=true
```

This returns:

```
<?xml version="1.0" encoding="UTF-8"?>  
  <access_token>
```

```
<value> ayBNRrDElFvyv7yrTlT2rAiOkCtth1Ez9M7cQyh1hHc </value>
<type> Bearer </type>
<lifetime> 3600 </lifetime>
<Expiration Date> 2020-07-02 18:39:48.818 -0700 </lifetime>
<scope> read write </scope>
</access_token>
```

At this point in time, the `type` and `scope` within the returned data have no meaning.

Once a valid token is returned, you may use this in subsequent API calls, with the following being an example - note there is no `User ID` or `Password` parameters:

```
https://www.myserver.com/evj/ExtraView/ev_api.action?
access_token=ayBNRrDElFvyv7yrTlT2rAiOkCtth1Ez9M7cQyh1hHc&statevar=fields&
include_fields=y
```

get_user_field_list

This function returns a list of the field and field titles for the security user object in ExtraView.

SYNTAX

```
http://www.myserver.com/evj/ExtraView/ev_api.action?
user_id=username
&password=password
&statevar=get_user_field_list
[&access_token=token-value]
```

NOTES

The optional `access_token` parameter allows you to use a valid OAuth2 token obtained with the `get_token` command. If you provide the `access_token` parameter, then the `user_id` and `password` parameters should not be provided. This prevents the password being sent in clear text over your network connection.

Sample output:

```
+SECURITY_USER_ID:User Id
+FIRST_NAME:First Name
+LAST_NAME>Last Name
+SECURITY_PASSWORD>Password
+EMAIL>Email Address
+USER_ROLE>User Group
+ALPHA_TIMEZONE:Time zone
LANGUAGE:Language
JOB_TITLE:Job Title
COMPANY_NAME:Company Name
ADDRESS_LINE1:Address 1
ADDRESS_LINE2:Address 2
CITY:City
STATE:State/Province
POSTAL_CODE:Zip/Postal Code
```

```
COUNTRY:Country
REGION:Region
WORK_TELEPHONE:Work Phone
HOME_TELEPHONE:Home Phone
CELL_PHONE:Cell Phone
FAX:Fax
PAGER:Pager
AREA_ID:Area Id
PROJECT_ID:Project Id
START_PAGE_ID:Start Page
USER_FIELD_1:User Field 1
USER_FIELD_2:User Field 2
USER_FIELD_3:User Field 3
USER_FIELD_4:User Field 4
USER_FIELD_5:User Field 5
USER_FIELD_6:User Field 6
USER_FIELD_7:User Field 7
USER_FIELD_8:User Field 8
USER_FIELD_9:User Field 9
USER_FIELD_10:User Field 10
LOGIN_ID:Alternative User Id
LDAP_UPSERT_TIME:LDAP Upsert Time
```

get_user_info

This command retrieves the values for a user's personal information. Only fields to which the inquiring user has permission will be returned.

SYNTAX

```
http://www.myserver.com/evj/ExtraView/ev_api.action?
user_id=username
&password=password
&statevar=get_user_info
<&login_id=username2> || <security_user_id=username2>
[&access_token=token-value]
```

NOTES

The `user_id` belongs to the user making the request. This user requires administrative level access to retrieve the information for users other than themselves or they require read access to the `USER.USER_ACCESS_UDF_DATA` security permission key. Either the `login_id` or the `security_user_id` of the user being inquired upon must be provided. The `security_user_id` is the user ID of the user being inquired upon.

The optional `access_token` parameter allows you to use a valid OAuth2 token obtained with the `get_token` command. If you provide the `access_token` parameter, then the `user_id` and `password` parameters should not be provided. This prevents the password being sent in clear text over your network connection.

This is a sample of the data returned from the `get_user_info` API call. Note that the delimiter is that set in the behavior setting named `DEFAULT_TEXT_REPORT_DELIMITER`:

```
LOGIN_ID:A
```


LAST_NAME:Smith
FIRST_NAME:Bill
JOB_TITLE:Manager
WORK_TELEPHONE:(831) 461-7100
HOME_TELEPHONE:
CELL_PHONE:(831) 555-1212
FAX:
PAGER:
COMPANY_NAME:Superior Software Corporation
ADDRESS_LINE1:269 Mount Hermon Road
ADDRESS_LINE2:
CITY:Scotts Valley
STATE:CA
POSTAL_CODE:95066
COUNTRY:USA
ENABLED_USER:Y
USER_FIELD1:Yes
USER_FIELD2:Engineer

get_users

This command retrieves the list of users within ExtraView.

SYNTAX

```
http://www.myserver.com/evj/ExtraView/ev_api.action?  
user_id=username  
&password=password  
&statevar=get_users  
&disabled=[Y|N|ONLY]  
&filter=pattern  
&filter_type=[ID|FIRST|LAST]  
[&access_token=token-value]
```

NOTES

The disabled parameter is optional. If provided, the optional values are:

- | | |
|------|--|
| Y | Return disabled users as well as enabled users |
| N | Return enabled users only. This is the default |
| ONLY | Only return disabled users |

The filter parameter is optional. This allows you to perform a wildcard pattern search for specific user records. The wildcard character is an asterisk (*) and you may have more than one of them in the pattern. For example:

- | | |
|-----|---|
| *OB | Return all records where the user ID ends with the letters OB. For example, this will |
|-----|---|

return BOB but not ROBERT

OB This would return both BOB and ROBERT

The `filter_type` parameter is optional. If provided, the optional values are as follows. You may provide multiple `filter_type` parameters in a single `get_users` call, each with one of the three possible values.

ID	This returns the User ID, from the <code>security_user.security_user_id</code> column of the user table
FIRST	This returns the first name, from the <code>security_user.first_name</code> column of the user table
LAST	This returns the last name, from the <code>security_user.last_name</code> column of the user table

The optional `access_token` parameter allows you to use a valid OAuth2 token obtained with the `get_token` command. If you provide the `access_token` parameter, then the `user_id` and `password` parameters should not be provided. This prevents the password being sent in clear text over your network connection.

get_valid_meta_data

This action retrieves a complete list of the metadata stored in ExtraView.

SYNTAX

```
http://www.myserver.com/evj/ExtraView/ev_api.action?
user_id=username
&password=password
&statevar=get_valid_meta_data
&fields=field_x
&user_info=x
&disabled_values=Y
&all=Y
[&access_token=token-value]
```

NOTES

This function can return a significant amount of data, depending on your installation.

By default, the data returned is for the user's current area and project only.

By default, the data returned is also filtered by any allowed values. For example, if there is an allowed value with the field named STATUS as the parent, then only the child records in the current area will be returned.

The previous two default conditions can be overridden, by using the optional parameter `all=Y` as part of the call.

The optional parameter `fields` can be used to refine the metadata returned to a single, or to a list of fields. For example, `fields=CUST_LIST` will return the metadata associated with the CUST_LIST field. You can

repeat this parameter as many times as you need in the parameter list, to return the metadata on a number of fields with a single command.

The optional parameter `disabled_values` will return all the users, including those that are disabled, within the output to the command.

The optional parameter `user_info` has three possible functions:

1. When no parameter is specified, the command works as documented in the other sections of this page
2. When the parameter has a value of N then no user information is generated in the return of the call
3. When the parameter has a value of Y then one set of generic information is returned, with `SECURITY_USER_ID` being used as the field ID.

The security permissions for each field are checked for the user performing the API command, and only fields to which the user has read permission are returned.

The result of the function is in the form:

```
field_name:meta_data_name:meta_data_title
```

where the delimiter `:` is the system delimiter stored in the behavior setting named `DEFAULT_TEXT_REPORT_DELIMITER`.

The optional `access_token` parameter allows you to use a valid OAuth2 token obtained with the `get_token` command. If you provide the `access_token` parameter, then the `user_id` and `password` parameters should not be provided. This prevents the password being sent in clear text over your network connection.

A small sample of data returned is shown below - note the delimiter in this case is the `|` character:

```
CATEGORY|ENHANCEMENT|Enhancement
```

```
CATEGORY|HARDWARE|Hardware
```

```
CATEGORY|SOFTWARE|Software
```

```
OS|5755|FREEBSD OS|5721|LINUX
```

```
OS|5913|NetBSD
```

```
OS|5711|SOLARIS
```

```
OS|5752|WINDOWS 95
```

```
OS|5787|WINDOWS 98
```

```
OS|5704|WINDOWS NT
```

```
PRIORITY|0|0
```

```
PRIORITY|1|1
```

```
PRIORITY|2|2
```

PRIORITY|3|3

PRIORITY|4|4

PRIORITY|5|5

PRIVACY|PRIVATE|Private

PRIVACY|PUBLIC|Public

PRODUCT_NAME|GLOBALINTERACTION|Global Interaction

PRODUCT_NAME|NETTRANSACTIONS|Net Transactions

RELEASE_STATUS|CLOSED|Closed

RELEASE_STATUS|FIXED|Fixed

RELEASE_STATUS|OPEN|Open

RELEASE_STATUS|PENDING|Pending

RELEASE_STATUS|UNASSIGNED|Unassigned

RESOLUTION|CANNOT DUPLICATE|Cannot Duplicate

RESOLUTION|DEFERRED|Deferred

RESOLUTION|DUPLICATE|Duplicate

RESOLUTION|FIXED|Fixed

RESOLUTION|NEED MORE INFO|Need more info

SEVERITY_LEVEL|CRITICAL|Critical

SEVERITY_LEVEL|HIGH|High

SEVERITY_LEVEL|LOW|Low

SEVERITY_LEVEL|MEDIUM|Medium

history

The history API command returns all the changes to item records, from a specified point in time to the current time.

SYNTAX

http://www.myserver.com/evj/ExtraView/ev_api.action?

```
user_id=username
&password=password
&statevar=history
&cutoff=timestamp
[&cutoff_end=timestamp]
&evhist_sellist=selectionList
[&hist_range_end=timestamp]
[&hist_range_start=timestamp]
[&username_display=ID | LAST | FIRST]
[&dd_name_n=value]
[&show_attributes=YES | NO]
[&access_token=token-value]
```

NOTES

The timestamp refers to the ITEM.LAST_DATE_UPDATED and the ITEM_HIST.LAST_DATE_UPDATED fields in the database. It is provided within the command in a value of any valid format allowed by ExtraView. If the value supplied can be misconstrued, the user's locale is used to determine the meaning of the date.

The cutoff timestamp provides the current value of the fields. The cutoff timestamp value is not included in the issues generated by this command; that is, the comparison is item timestamp is greater than cutoff timestamp. The cutoff parameter is required.

The cutoff_end parameter is optional. If omitted, there all issues up until the current time are retrieved. If provided, the value must be greater than the value of cutoff. This can be used to limit the items for which history is generated to a specific time period.

The evhist_sellist parameter is a comma-delimited list of field names. This is an optional parameter, and if provided is a list of the fields that are output by the command. If it is not provided, the field list is taken from the detailed report of the user's current business area and project.

hist_range_start and hist_range_end are optional parameters. If omitted, then the items retrieved are generated based upon updates that occurred between these times. If provided then the query becomes a range query, where hist_range_start is the beginning time and hist_range_end is the end time of the updates to the records retrieved.

The optional parameter username_display may be used to override the behavior setting named USERNAME_DISPLAY, for the duration of the execution of a single API call. This allows the developer to return the user names in a different format than the system-wide default.

dd_name_n=value represents an optional list of name value pairs to be used as filters on the query that returns results for the command.

The fields returned by the command are formatted as XML data.

The fields returned in the XML data are subject to two restrictions. The user must have read permission for the field, and the field must exist on the detailed report layout for the user's current area and project settings.

The item fields returned by the command are in the same XML format as those returned by the API get command.

The optional `access_token` parameter allows you to use a valid OAuth2 token obtained with the `get_token` command. If you provide the `access_token` parameter, then the `user_id` and `password` parameters should not be provided. This prevents the password being sent in clear text over your network connection.

The item fields returned may contain repeating row data within the XML. If a deleted item record is encountered in the returned data, this will be shown in the XML as follows –

```
<DELETED_RECORD ID='item id' FULL_TIMESTAMP='issue timestamp'/>
```

This command provides a convenient method of determining all changes to the ExtraView database since a point in time, to be used to synchronize data with another ExtraView instance, or with a completely separate application (For example, ExtraView enables the synchronization of data with the Perforce SCM system with this command).

import_allowed_values

This API call imports a tab-delimited file of parent and child values into the ExtraView database. Unlike most API commands (but similar to the `add_attachment` command), this command is designed to be used within an HTML page.

SYNTAX

```
<form method="POST" http://www.myserver.com/evj/ExtraView/ev_api.action?
user_id=username
&password=password
&statevar=import_allowed_values
&file=filename
&area=area_id
&project=project_id
&parent=parent_dd_name
&child=child_dd_name
&enctype="multipart/form-data">
[&access_token=token-value]
</form>
```

The form to be uploaded when prompted by the form must have the following tab-delimited format, where --> represents the tab character:

```
parent_value1 --> child_value1
```

```
parent_value1 --> child_value2
```

```
parent_value2 --> child_value3
```

```
parent_value2 --> child_value4
```

NOTES

`area_id` specifies the `area_id` into which the allowed values will be imported. You can use the Business

Area list administration utility in the web interface to see the ID's for all areas.

`project_id` specifies the `project_id` into which the allowed values will be imported. You can use the Project list administration utility in the web interface to see the ID's for all projects.

`parent_dd_name` specifies the data dictionary name of the parent field which has the allowed value relationship with the specified child.

`child_dd_name` specifies the data dictionary name of the child field which has the allowed value relationship with the specified parent.

The values in both the parent and child allowed value lists must already exist to work with this command.

The optional `access_token` parameter allows you to use a valid OAuth2 token obtained with the `get_token` command. If you provide the `access_token` parameter, then the `user_id` and `password` parameters should not be provided. This prevents the password being sent in clear text over your network connection.

EXAMPLE

The following HTML file can be used as a simple template for this command:

```
<html>
  <body>
    <form method="post" action="http://www.mycompany.com/evj/ExtraView/ev_api.action?
      user_id=username&password=password&statevar=import_allowed_values&
      area_id=0&project_id=0&parent=IT_BUILDING&child=IT_BUILDING_FLOOR"
      enctype="multipart/form-data">
      <input type="file" name="file" id="file" size="1" value="" maxlength="256">
      <input type="submit" value="Upload Attachment(s)" class="menuButton"
        title="Click to process and upload the attachments you have selected">
    </form>
  </body>
</html>
```

insert

This API call inserts a new record into the ExtraView database. All fields are treated as optional, and all defined business rules are executed and checked before and after the record is inserted (the `preupdate` and `postupdate` rule directives). The fields used with this command are typically those that are placed on the `ADD_PROBLEM` layout for the business area and project specified in the command syntax.

SYNTAX

```
http://www.myserver.com/evj/ExtraView/ev_api.action?  
user_id=username  
&password=password  
&statevar=insert  
&p_template_file=file.html  
&username_display=ID | LAST | FIRST  
&send_email=no  
&field_name1=value1 [&field_name2=value2] [&field_name_n=valuen]  
[&access_token=token-value]
```

There are two name-value pairs that can be provided, that are not fields within ExtraView. These are –

1. `&send_email=no`

If you supply this name and value, then the insert will override the standard default with which ExtraView will generate email upon the submission of a new issue

1. `&username_display=ID | LAST | FIRST`

The optional parameter `USERNAME_DISPLAY` may be used to override the behavior setting named `USERNAME_DISPLAY`, for the duration of the execution of a single API call. This allows the developer to return the user names in a different format than the system-wide default.

If the issue is added to the database without error, the function will return the issue number as shown below. Note that the term “Bug #” is dependent on the screen title used for the ID field in the data dictionary.

Bug # 12352 added.

NOTES

You must not provide a name and value for the ID field. ExtraView allocates all new issue numbers internally and any attempt to provide an ID will result in an error message, similar to "You cannot provide a Bug # when you are adding a new issue."

Many of the fields within the ExtraView database, such as `product_name`, `status`, `priority`, `severity_level`, `assigned_to`, `category`, etc., must be given valid values that already exist within the meta-data of your installation. If you attempt to enter a value that is not known to ExtraView, an error message will result.

If you attempt to contravene a business rule, an error message will result. For example, if your installation only allows new issues to be `SUBMITTED` and you immediately attempt to provide a value of `CLOSED` when inserting a record, an error message will result.

Also, note that special non-alphabetic characters, such as a space, must be “escaped”.

You may optionally specify the values for the `AREA` and `PROJECT` into which the issue is to be inserted, using their numeric ID. These ID’s can be seen within the administration utilities in the web interface. You may not use their titles. If you do not specify the `AREA` and `PROJECT` within the parameter list, then the current `AREA` and `PROJECT` of the current user are used. For example, use:

... .. &p_area=3&p_project=58

All field permissions are obeyed with the command, and if you attempt to insert a field that does not have write permission, then the whole command will fail.

The optional `access_token` parameter allows you to use a valid OAuth2 token obtained with the `get_token` command. If you provide the `access_token` parameter, then the `user_id` and `password` parameters should not be provided. This prevents the password being sent in clear text over your network connection.

Inserting Document & Image type fields

These fields require additional metadata in the form of a description and the file to upload's character set. You will have created an HTML form for the upload. An HTML snippet that shows how to make this work is as follows:

```
Image Description: <input type="text" name="image_desc"
value="image_dd_name desc" />
<br />
<input type="hidden" name="image_dd_name_charset" value="UTF-8" />
File to upload: <input type="file" name="image_dd_name" />
```

This form assumes an image field that has a data dictionary name of `image_dd_name`. Note the optional charset and desc. The charset is not required for image fields, but for documents it can be useful. The default, if charset is not given is UTF-8.

insert_user

This action creates a new user in the ExtraView database.

SYNTAX

http://www.myserver.com/evj/ExtraView/ev_api.action?

`user_id=username`

`&password=password`

`&statevar=insert_user`

`&p_template_file=file.html`

`&company_name=user_company`

`&email=email_address`

`&security_user_id =userID`

`&last_name=user_last_name`

`[&first_name=user_first_name]`

`[&security_password=password]`

`[&job_title=user_job_title]`

`[&address_line1=user_address_line_1]`

`[&address_line2=user_address_line_2]`

`[&city=city]`

`[&state=state]`

`[&postal_code=postal_code]`

```
[&country=country]
[&work_telephone=work_telephone]
[&home_telephone=home_telephone]
[&cell_phone=cell_phone]
[&address_line1=user_address_line_1]
[&fax=fax]
[&pager=pager]
[&access_token=token-value]
```

NOTES

You must always provide `security_user_id`, `security_password`, `first_name`, `last_name` and `email` as fields.

If the ExtraView application default named `ENFORCE_DETAILED_USER_INFO` has a value of `YES`, then the `COMPANY_NAME`, `ADDRESS_LINE1`, `CITY`, `STATE`, `POSTAL_CODE` and `WORK_TELEPHONE` must be provided.

The command will fail if the `security_user_id` already exists.

You must have update permission to the security key named `SE_SECURITY_USER` before you can execute the command.

The optional `access_token` parameter allows you to use a valid OAuth2 token obtained with the `get_token` command. If you provide the `access_token` parameter, then the `user_id` and `password` parameters should not be provided. This prevents the password being sent in clear text over your network connection.

insert_xml

This action inserts a new record or records in the ExtraView database from input formatted with XML. The input can be made as part of the HTTP data stream, or can be input from a file in XML format.

SYNTAX

```
http://www.myserver.com/evj/ExtraView/ev_api.action?
user_id=username
&password=password
&statevar=insert_xml
&xml_file_name=filename | &xml_string=xml_data
&p_template_file=file.html
[&access_token=token-value]
```

NOTES

The `statevar` must be `insert_xml`.

Provide either the `xml_file_name` or `xml_string`, but not both. You provide `xml_file_name` if the input is from a file that exists at the time of the execution of the command. You provide `xml_string`, if the data for the insert is provided as part of the HTTP request. This string contains the XML data to be parsed.

The optional `access_token` parameter allows you to use a valid OAuth2 token obtained with

the `get_token` command. If you provide the `access_token` parameter, then the `user_id` and `password` parameters should not be provided. This prevents the password being sent in clear text over your network connection.

`p_template_file` is the name of the template to be used for return value string generation. Generally, this template file is stored on the server in the `WEB-INF/user_templates` directory. On normal completion of the operation, this template undergoes parameter substitution with the following variable names:

Tag	Explanation
<code>__ID__</code>	The item number of the last item inserted
<code>__NUMBER_ITEMS_INSERTED__</code>	The number of inserted items
<code>__ITEM_TITLE__</code>	The title of the <code>ITEM_ID</code> dictionary entry

See the section on Templates for a full explanation of how to create user templates. If no template file is requested, the command returns a completion message to the calling program via HTTP.

On error completion, the return string contains an error message substituted into the `error.html` user template in the format:

```
error-message "at line=xxx and column number=yyy"
```

where `xxx` and `yyy` are the values returned by the XML parser.

As an example, the following message may be returned:

```
"The end-tag for element type "ITEM" must end with a '>' delimiter at line=8 and column number=9"
```

Only one record should be inserted with the `XML_STRING` in one call to the API. When the input is in a file, there is no restriction to the number of records in a single operation.

The [Administration Guide](#) contains additional information, including the DTD for the XML data and a list of all possible errors.

item_exists

This action checks the ExtraView database for the existence of an issue.

SYNTAX

```
http://www.myserver.com/evj/ExtraView/ev_api.action?
user_id=username
&password=password
&statevar=item_exists
&id=nnnnn
[&strict=no | yes]
[&access_token=token-value]
```

NOTES

The output from the call is of the form Defect #nnnnn exists or Defect #nnnnn does not exist.

The optional parameter `strict`, with a value of `yes`, enforces the action to operate only on `ALT_ID`. If there is no match for the value of the `ALT_ID` in the specified `ID` parameter, then the message *Invalid Id* will be returned. This means that a matching `ID` value will be ignored.

The optional `access_token` parameter allows you to use a valid OAuth2 token obtained with the `get_token` command. If you provide the `access_token` parameter, then the `user_id` and `password` parameters should not be provided. This prevents the password being sent in clear text over your network connection.

list_attachment

This action allows you to obtain a list of files attached to an existing record in the ExtraView database. Most importantly, you are able to get a list of the attachment ID's, allowing you to distinguish between the files attached to an issue, for the download action.

SYNTAX

```
http://www.myserver.com/evj/ExtraView/ev_api.action?  
user_id=username  
&password=password  
&statevar=list_attachment  
&p_template_file=file.html  
&id=nnnnn  
[&strict=no | yes]  
[&access_token=token-value]
```

The return from this command may look like this:

```
12-JUN-2001:index.html:804:Rather, Gary:21:The index.html as revised  
14-JUN-2001:Applic.doc:28160:Koppel, Carl:38:Application notes
```

NOTES

The delimiter is the value of the `DEFAULT_TEXT_REPORT_DELIMITER` in the ExtraView application defaults. The order of the fields returned is date of upload, filename, file size (in bytes), name of person who uploaded the attachment, ID of the attachment and the description.

The optional parameter `strict`, with a value of `yes`, enforces the action to operate only on `ALT_ID`. If there is no match for the value of the `ALT_ID` in the specified `ID` parameter, then the message *Invalid Id* will be returned. This means that a matching `ID` value will be ignored.

The optional `access_token` parameter allows you to use a valid OAuth2 token obtained with the `get_token` command. If you provide the `access_token` parameter, then

the `user_id` and `password` parameters should not be provided. This prevents the password being sent in clear text over your network connection.

run_report

This function runs an existing report, using its `report_id` obtained from the `get_reports` function.

SYNTAX

```
http://www.myserver.com/evj/ExtraView/ev_api.action?  
user_id=username  
&password=password  
&statevar=run_report  
[&username_display=ID | LAST | FIRST]  
[&api_reverse_lookup=NO | YES]  
&report_id=nnnn  
&page_length=100  
&record_start=1  
&record_count=120  
&p_output_type=MS_EXCEL | MS_WORD | PDF | TEXT  
&persist_handle=xxx  
&exclude_data_images=no | yes  
[&field1=value1] [&field2=value2] [&fieldn=valuen]  
[&access_token=token-value]
```

NOTES

- This command runs a report from the available list of public and private reports using the `report_id` obtained from the `get_reports` function
- The output is returned in XML format
- The fields returned in the results correspond to the fields on the detailed report layout of the user's current business area, current project and current role. However, if the behavior setting named `REPORT_DTL_ITEM_DATA_LAYOUT` is set to YES, then the detailed report for the user's current role and the issue's business area and project are used to define the fields being returned
- The parameter `report_id` specifies the ID of the report as stored in ExtraView. This ID may be seen on the report screen or within the report editor for the report
- The parameter named `page_length` is required and gives the ExtraView API the maximum number of records to return with one call. In conjunction with the parameter named `p_record_start`, you can build JavaScript functions to retrieve paginated results, if you believe your searches can bring up large number of records
- The parameter named `record_start` is required and gives ExtraView the number of the first record in the search results to display. This is used in conjunction with the parameter named `p_page_length`, which defines the number of results to retrieve. If there is a possibility that `record_start` can be greater than `page_length`, you must use the parameter named `record_count`. Using these parameters, you can build functions to retrieve paginated results if you believe your searches can bring up large number of records
- The optional parameter `api_reverse_lookup` has a default value of NO. If set to YES, then all the user defined field values are expressed with the field's title as opposed to the field's ID. This is useful when using fields with a display type of list, where the programmer needs to know the internal ID of

a list value in order to use it as a parameter in the API call. With `api_reverse_lookup=YES`, then the programmer can use the field's title. Usually this is well known and obvious as opposed to ID's which need to be discovered through a SQL query on the database

- The optional parameter `username_display` may be used to override the behavior setting named `USERNAME_DISPLAY`, for the duration of the execution of a single API call. This allows the developer to return the user names in a different format than the system-wide default. The optional parameter named `persist_handle` may be used to paginate the result set by spreading the results returned over several separate calls using this API command. The `persist_handle` identifies the result set, qualified by the `user_id`, that is used to maintain the result set information across multiple API calls. The rules for using `persist_handle` are as follows:
 - A new result set is generated whenever `record_start=1`; an existing result set is used whenever `record_start > 1`
 - The same `persist_handle` value can only be used for subsequent pages of the result set on the same node; in clustered environments, if a subsequent call is directed to another node, the result set will not be found and results will not be returned
 - The maximum number of pages returned is 10. This means that the `page_length` must be greater than 1/10th the size of the result set (# of rows returned) or the results will be truncated with no error indication.
- The parameters represented by `field1=value1` and `field2=value2` provide runtime filters that are required by the report. For a name value pair to be valid with this API call, the field must have been defined within the report as a runtime filter. You must provide a name value pair for each and every runtime filter in the report you are running. Failure to do this will result in an error being displayed. More sophisticated runtime filters may be defined as follows in the following example. This defines 3 runtime filters, each predefined in the report editor within the desktop user interface:

- The predefined example runtime filters are:

- `DATE_CREATED` - Date Created
- `TIMESTAMP` - Last Modified
- `PRIORITY` - Priority

- The example parameters for the call are:

```
user_id=xx&password=xx
&statevar=run_report
&page_length=100
&record_start=1
&username_display=LAST
&report_id=1234
&api_reverse_lookup=YES
&p_ql_search_mode=ADVANCED
&p_fset=0
&p_fieldName=DATE_CREATED
&p_operator=between
&p_value1_EVDISPLAY=09/01/2017
&p_mvalue1=09/01/2017
&p_value2=09/30/2017
&p_fset=0
&p_fieldName=TIMESTAMP
&p_operator=>
&p_value1_EVDISPLAY=09/08/2017
&p_mvalue1=09/08/2017
&p_fset=0
&p_fieldName=PRIORITY
&p_operator==
&p_value1_EVDISPLAY=P 2
&p_mvalue1=
```

- The basic syntax of each runtime filter is a set of following six form parameters

1. `p_fset`
2. `p_fieldName`
3. `p_operator`
4. `p_value1_EVDISPLAY`
5. `p_mvalue1`
6. `p_value2`

- The values of each parameter are:

1. `p_fset` - `p_fset` is always set to 0, like `p_fset=0`

2. `p_fieldName` - `p_fieldName` is the Data Dictionary name, such as
`p_fieldName=DATE_CREATED`, `p_fieldName=TIMESTAMP`, and `p_fieldName=PRIORITY`

3. `p_operator` - `p_operator` is one of the following values but depends on the display type of the field, the same as in the desktop user interface

```
=
>
<
<>
<=
>=
contains
not_empty
empty
between
```

4. `p_value1_EVDISPLAY` - for `POPUP`, `DATE` and `DAY` display type fields, you need to specify this value

For `DATE` and `DAY` fields, an example is `p_value1_EVDISPLAY=09/08/2017`

For `POPUP` fields an example is `p_value1_EVDISPLAY=P 2`

Note: you need to have the parameter `api_reverse_lookup=YES` to enable the reverse lookup of list fields using their title rather than their name or the database `UDF_LIST_ID`.

5. `p_mvalue1` - All display types, except `POPUP` need to specify the database values

For `DATE` and `DAY` fields, you need to specify the same value of `p_value1_EVDISPLAY`, for example `p_mvalue1=09/08/2017`

For `POPUP` fields, you don't need to specify any parameter if `api_reverse_lookup=YES`

For other display types, you need to specify the database values

6. `p_value2` - `p_value2` is only used for `DATE` and `DAY` fields when you using the `between` operator, for example `p_value2=09/30/2017`

- The optional `access_token` parameter allows you to use a valid OAuth2 token obtained with the `get_token` command. If you provide the `access_token` parameter, then the `user_id` and `password` parameters should not be provided. This prevents the password being

sent in clear text over your network connection

- Not all report types are supported by this command. The supported report types are Column, Summary, Matrix and Aging. The remaining report types generate graphical information which is not suitable for alphanumeric output
- If the report you are running uses the advanced report filters, then this automatically implies that the report will also use expanded report filters
- This API command uses the filters specified in the report. Any runtime filters you have within the report can be replaced with filters specified within the command. Note that if you wish to run a report with runtime filters and want to use advanced search features such as numeric and date operators, you should use the `search` API command. The `search` API command has more flexibility in this case.
- The report may be output to different file formats with the optional `p_output_type` parameter. You may output the report to Microsoft Excel, Microsoft Word, Adobe PDF or text.
- If the data returned includes an image, the data for the image will be base 64 encoded. However, the optional parameter `exclude_data_images` will inhibit images embedded within HTML Area fields from being output, if set to a value of `yes`.

search

This API call allows you to search the ExtraView database and to return a set of records that match the search criteria. This function is equivalent to the search capability within the browser version of ExtraView. It is extremely powerful as multiple search filters can be set on different fields. For example, it is straightforward to set up a search that responds to a query such as “tell me all the open issues against a specific module within a specific product that contain a specific keyword.

SYNTAX

```
http://www.myserver.com/evj/ExtraView/ev_api.action?  
user_id=username  
&password=password  
&statevar=search  
&page_length=100  
&record_start=1  
&record_count=10  
[&p_template_file=file.html]  
&persist_handle=xxx  
[&access_token=token-value]  
[&username_display=ID | LAST | FIRST]  
&status=OPEN &module_id=WIDGET  
&product_name=MY_PRODUCT  
&keyword=wireless%20PDA  
[&report_id=nnn]  
...
```

For example, a return from a valid search may be as shown in the following XML:

```
<?xml version="1.0"?>  
<EXTRAVIEW_RESULTS>
```



```
<PROBLEM_RECORD>
<ID TITLE="Bug #">12266</ID>
<SHORT_DESCR TITLE="Title"><![CDATA[Here is the title]]></SHORT_DESCR>
<SEVERITY_LEVEL TITLE="Severity">02</SEVERITY_LEVEL>
<PRIORITY TITLE="Priority">2</PRIORITY>
<PRODUCT_NAME TITLE="Product">NetOp</PRODUCT_NAME>
<DATE_CREATED TITLE="Created">19-APR-01</DATE_CREATED>
<OWNER TITLE="Owner">DIAMONDK</OWNER>
<TIMESTAMP TITLE="Last Modified">21-JUN-01</TIMESTAMP>
<ASSIGNED_TO TITLE="Assigned To">CARL.KOPPEL</ASSIGNED_TO>
<PRIVACY TITLE="View">Private</PRIVACY>
<CATEGORY TITLE="Category">Software</CATEGORY>
<RESOLUTION TITLE="Disposition"></RESOLUTION>
<DATE_CLOSED TITLE="Date Closed"></DATE_CLOSED>
<ORIGINATOR TITLE="Originator">ROBBIE.LLOYD</ORIGINATOR>
<ORIGINATOR_NAME TITLE="Originator">Rob Lloyd</ORIGINATOR_NAME>
<MODULE_RECORD>
<MODULE_NAME TITLE="Module">Server</MODULE_NAME>
</MODULE_RECORD>
<RELEASE_RECORD>
<RELEASE_FOUND TITLE="Version Open">1.0.1.16</RELEASE_FOUND>
<RELEASE_FIXED TITLE="Version Closed"></RELEASE_FIXED>
<RELEASE_STATUS TITLE="Release Status">Open</RELEASE_STATUS>
</RELEASE_RECORD>
</PROBLEM_RECORD>
<PROBLEM_RECORD>
<ID TITLE="Bug #">12118</ID>
<SHORT_DESCR TITLE="Title"><![CDATA[Another problem]]></SHORT_DESCR>
<SEVERITY_LEVEL TITLE="Severity">01 sev</SEVERITY_LEVEL>
<PRIORITY TITLE="Priority">1</PRIORITY>
<PRODUCT_NAME TITLE="Product">NetOp</PRODUCT_NAME>
<DATE_CREATED TITLE="Created">14-FEB-01</DATE_CREATED>
<OWNER TITLE="Owner">CARL.KOPPEL</OWNER>
<TIMESTAMP TITLE="Last Modified">21-APR-01</TIMESTAMP>
<ASSIGNED_TO TITLE="Assigned To">CARL.KOPPEL</ASSIGNED_TO>
<PRIVACY TITLE="View">Private</PRIVACY>
<CATEGORY TITLE="Category">Software</CATEGORY>
<RESOLUTION TITLE="Disposition"></RESOLUTION>
<DATE_CLOSED TITLE="Date Closed"></DATE_CLOSED>
<ORIGINATOR TITLE="Originator">CARL.KOPPEL</ORIGINATOR>
<ORIGINATOR_NAME TITLE="Originator">Carl Koppel</ORIGINATOR_NAME>
<MODULE_RECORD> <MODULE_ID TITLE="Module">Client</MODULE_NAME>
</MODULE_RECORD>
<RELEASE_RECORD>
<RELEASE_FOUND TITLE="Version Open">Framework 1.1</RELEASE_FOUND>
<RELEASE_FIXED TITLE="Version Closed"></RELEASE_FIXED>
<RELEASE_STATUS TITLE="Release Status">Closed</RELEASE_STATUS>
</RELEASE_RECORD>
</PROBLEM_RECORD>
</EXTRAVIEW_RESULTS>
```

Note that if you do not have permission to view any of these fields, they will not appear in the output from the action.

This action purposely returns only a small number of fields from the database. If you require additional fields, you can parse the ID out of the returned information and then use the get action to read the remaining fields within the database.

You should be careful in your use of this action as it can conceivably return extremely large result sets to you.

NOTES

- The fields returned in the results correspond to the fields on the detailed report layout of the user's current business area, current project and current role. However, if the behavior setting named `REPORT_DTL_ITEM_DATA_LAYOUT` is set to YES, then the detailed report for the user's current role and the issue's business area and project are used to define the fields being returned
- The optional `access_token` parameter allows you to use a valid OAuth2 token obtained with the `get_token` command. If you provide the `access_token` parameter, then the `user_id` and `password` parameters should not be provided. This prevents the password being sent in clear text over your network connection
- All searches within text type fields are processed using a *contains* operator, not an *equals* operator. For example `&short_descr=problem` returns all records where the `short_descr` field contains the word `problem`, not just those where the `short_descr` equals a value of `problem`
- The `keywords` parameter is not a database field, but can be used to provide an unlimited number of keywords as search filters in a space-delimited list to ExtraView. Note that you must "escape" characters such as spaces in this list
- If you want to search for text contained within a text field, you can use a wildcard convention using asterisks (*) as the wildcards
- You can search using an inequality filter as a parameter. For example, `&release!=1.2` used as a parameter will work
- You can search looking for null values in the results with a filter similar to `&release={null}` will search for all records with a null value in the field `release`
- The parameter named `p_page_length` is required and gives the ExtraView API the maximum number of records to return with one call. In conjunction with the parameter named `p_record_start`, you can build script functions to retrieve paginated results, if you believe your searches can bring up large number of records
- The parameter named `p_record_start` is required and gives ExtraView the number of the first record in the search results to display. In conjunction with the parameter named `p_page_length`, you can build script functions to retrieve paginated results, if you believe your searches can bring up large number of records
- You need to supply the parameter named `p_record_count` whenever `p_record_start` is greater than `p_page_length`
- The parameter named `p_template_file` is optional. If it is not provided, ExtraView returns the results of the query in XML format. If it is provided, its value is the name of a server-side file that contains a template to format the results of the query. Using this template provides a means of formatting the output from the search command to a style of your own choosing. Most commonly, this is used to provide a style of output consistent with that of the remainder of your own company's web site. An example of the source to a template file is shown below.

```
<TABLE cellpadding="2" cellspacing="2" border="1" bordercolor="#FFCCCC">
```

```

<TR bgcolor="#CCCCFF">
<TD align=right width=80><font size="-1">Defect # </font>
</TD>
<TD width=800><font size="-1">__TAG_ID__ </font></TD>
</TR>
<TR>
<TD align=right><font size="-1">Title</font></TD>
</TR>
<TR>
<TD><font size="-1">__TAG_SHORT_DESCR__ </font></TD>
</TR>
<TR>
<TD align=right><font size="-1">Product</font></TD>
</TR>
<TR>
<TD><font size="-1">__TAG_PRODUCT_NAME__ </font></TD>
</TR>
<TR>
<TD align=right><font size="-1">Description</font></TD>
</TR>
<TR>
<!-- __DESCRIPTION__ -->
</TR>
<TR>
__TAG_DESCRIPTION_TEXT__
</TR>
<TR>
<TD align=right><font size="-1">Comments</font></TD>
</TR>
<TR>
<b>__TAG_COMMENTS_USER__: __TAG_COMMENTS_TIMESTAMP__ </b>
</TR>
<TR>
<!-- __COMMENTS__ -->
</TR>
<TR>
__TAG_COMMENTS_TEXT__
</TR>
</TABLE>

```

- The optional parameter `username_display` may be used to override the behavior setting named `USERNAME_DISPLAY`, for the duration of the execution of a single API call. This allows the developer to return the user names in a different format than the system-wide default
- If no records are returned by the search, the message "No records found." will be displayed
- You must provide at least one name and value for the search criteria. If you do not do this, you will see the message "No parameters entered"
- Many of the fields within the ExtraView database, such as `product_name`, `status`, `priority`, `severity_level`, `assigned_to`, `category`, etc., must be given valid values that already exist within the metadata of your installation. If you attempt to enter a value that is not known to ExtraView, an error message will result
- The optional parameter named `persist_handle` may be used to paginate the result set by spreading the

results returned over several separate calls using this API command. The `persist_handle` identifies the result set, qualified by the `user_id`, that is used to maintain the result set information across multiple API calls. The rules for using `persist_handle` are as follows:

- A new result set is generated whenever `record_start=1`; an existing result set is used whenever `record_start > 1`
- The same `persist_handle` value can only be used for subsequent pages of the result set on the same node; in clustered environments, if a subsequent call is directed to another node, the result set will not be found and results will not be returned
- The maximum number of pages returned is 10. This means that the `page_length` must be greater than 1/10th the size of the result set (# of rows returned) or the results will be truncated with no error indication.
- The optional parameter `report_id` will use the layout associated with a report with the ID to format the results. Note that the filters specified within the report are not used, but the filters used in the `search URL` are used instead
- The format of date filter parameters, as used in runtime filters in a report is as follows:

```
<date> || <date> - <date> || -<date> || <date>-
```

The latter three are date ranges; `rangestart to rangestop`, `rangestop`, and `rangestart` respectively.

Where `<date>` is:

```
<unquoted date> || <sq><unquoted date><sq> || <dq><unquoted date><dq>
```

where `<dq> ::= "` (a double quote)

and `<sq> ::= '` (a single quote)

A date may contain a dash if it appears in quotes. Otherwise, a dash is not permitted except as a date range signifier.

search_field_list

This command provides a list of fields that may be used as query filters for the current user.

SYNTAX

```
http://www.myserver.com/evj/ExtraView/ev_api.action?
user_id=username
&password=password
&statevar=search_field_list
[&access_token=token-value]
```

NOTES

The delimiter used the results is the value of the `DEFAULT_TEXT_REPORT_DELIMITER` in the ExtraView application defaults. This command takes into account all security permissions for the user. The general form of each entry returned by the command is:

```
<prefix><fieldName><delimiter><fieldTitle><delimiter><parentName>
```

- The `parentName` is blank or the immediate parent in an allowed-value or database-type relationship
- The delimiter is that specified in in the behavior setting named `DEFAULT_TEXT_REPORT_DELIMITER`
- The characters in the prefix have the following meanings:
 - ~ means the field is part of a repeating row layout
 - * means the field has a display type of `textarea` or `logarea`
 - % means the field has a display type of `user`

The optional `access_token` parameter allows you to use a valid OAuth2 token obtained with the `get_token` command. If you provide the `access_token` parameter, then the `user_id` and `password` parameters should not be provided. This prevents the password being sent in clear text over your network connection.

An example of the return from this command is:

```
TIMESTAMP>Last Modified
EMAIL_SWITCH:Generate Email
%CHANGED_BY:Changed By
KEYWORD:Keywords
PRODUCT_NAME:Product
*SUGGESTIONS:Engineering Remarks
RELEASE_FOUND:Release
SHORT_DESCR:Title
SEVERITY_LEVEL:Severity
PRIORITY:Priority
STATUS:Status
ID:Defect #
DATE_CREATED:Created
%OWNER:Owner
CATEGORY:Category
RESOLUTION:Resolution
%LAST_CHANGE_USER:Changed by
DAYS_IN_STATUS:Days in Status
DAYS_OPEN:Days Open
MONTHS_OPEN:Months Open
%ASSIGNED_TO:Assigned To
```

```
%ORIGINATOR:Originator  
  
PRIVACY:View  
  
RELEASE_FIXED:Release Fixed  
  
MONTHS_IN_STATUS:Months In Status  
  
START_UPDATE:Updated Start Date  
  
WEEKS_IN_STATUS:Weeks In Status  
  
WEEKS_OPEN:Weeks Open  
  
BUILD_FOUND_IN:Build Found In  
  
BUILD_FIXED_IN:Build Fixed In
```

set_area_proj

This command sets the working area and project for the current user.

SYNTAX

```
http://www.myserver.com/evj/ExtraView/ev_api.action?  
user_id=username  
&password=password  
&statevar=set_area_proj  
&area_id=nnn1  
&proj_id=nnn2  
[&access_token=token-value]
```

NOTES

Both the `area_id` and the `project_id` must exist, else the command will fail.

The `proj_id` must be valid within the `area_id`, else the command will fail.

The optional `access_token` parameter allows you to use a valid OAuth2 token obtained with the `get_token` command. If you provide the `access_token` parameter, then the `user_id` and `password` parameters should not be provided. This prevents the password being sent in clear text over your network connection.

set_role

This action sets the user role of the current user.

SYNTAX

```
http://www.myserver.com/evj/ExtraView/ev_api.action?  
user_id=username  
&password=password  
&statevar=set_role  
&user_group=role_id  
[&access_token=token_value]
```

NOTES

The `role_id` specified, must exist, else the command will fail.

You can get a list of the valid roles with the command `get_roles`.

The optional `access_token` parameter allows you to use a valid OAuth2 token obtained with the `get_token` command. If you provide the `access_token` parameter, then the `user_id` and `password` parameters should not be provided. This prevents the password being sent in clear text over your network connection.

update

This command allows you to update an existing record within ExtraView's database. Only values that are being altered need be supplied within the API call. Fields whose values are to remain the same need not be supplied as parameters. All defined business rules using the `preupdate` and the `postupdate` directives are executed and checked before and after the record is updated. The fields used with this command are typically those that are placed on the `EDIT_PROBLEM` layout for the business area and project specified in the syntax of the command.

SYNTAX

```
http://www.myserver.com/evj/ExtraView/ev_api.action?  
user_id=username  
&password=password  
&statevar=update  
&p_template_file=file.html  
&id=nnnnn  
[&strict=no | yes]  
[&access_token=token-value]  
&field1=value1 [&field2=value2] [fieldn=valuen]
```

There is one additional name and value pair that can be provided, that is not a field within ExtraView. This is `&send_email=no`. If you supply this name and value pair, then the update will override the set default with which ExtraView will generate email upon the update of an existing issue.

If the issue is updated without error, the function will return the issue number as shown below. Note that the term "Bug #" is dependent on the screen title used for the ID field in the data dictionary.

Bug # 12352 updated.

NOTES

You must provide a valid name and value pair for the ID field. The value must be an existing issue ID within the ExtraView database. If you do not provide this, an error message is generated.

The optional parameter `strict`, with a value of `yes`, enforces the action to operate only on `ALT_ID`. If there is no match for the value of the `ALT_ID` in the specified ID parameter, then the message *Invalid Id* will be returned. This means that a matching ID value will be ignored.

Many of the fields within the ExtraView database, such as `product_name`, `status`, `priority`, `severity_level`, `assigned_to`, `category`, etc., must be given valid values that already exist within the metadata of your installation. If you attempt to enter a value that is not known to ExtraView, an error message will result.

If you attempt to contravene a business rule, an error message will result. For example, if your installation only allows issues to be `FIXED` if they are in an `OPEN` state and you provide a value of `CLOSED`, an error message will result.

All field permissions are obeyed with the command, and if you attempt to update a field that does not have write permission, then the whole command will fail.

The Role of `PROBLEM_RELEASE_ID` in the update Command

Usually, when one or more specific repeating rows must be affected (modified or deleted) through the update command, the `PROBLEM_RELEASE_ID` parameter is used to identify specific rows. More than one instance of `PROBLEM_RELEASE_ID` may be specified. In this case, each *field=value* parameter corresponds to the `PROBLEM_RELEASE_ID` which shares the same position in the parameter list for the same field name.

Thus, for example,

```
...&problem_release_id=111&problem_release_id=222&rr_field=abc&rr_field=def
```

maps the

```
rr_field=abc to problem_release_id 111 and rr_field=def to problem_release_id 222.
```

When no `PROBLEM_RELEASE_ID` in the parameter list maps to a specific `rr_field=value`, then a new repeating row is added to accommodate the new value.

Multiple Repeating Row Types

ExtraView supports repeating rows of multiple types. Each type denotes a grouping of fields based on a layout with that *item group type*. All repeating row types can be updated via the API. There are two ways of specifying a repeating row type:

- Specific `PROBLEM_RELEASE_IDxxx` values, where `xxx` is the item group type, e.g., `PROBLEM_RELEASE_ID3`
- Generic `PROBLEM_RELEASE_ID` values.

Note1: Specific and generic `PROBLEM_RELEASE_ID`'s may not be combined in a single API call.

Note2: Each API Update operation using generic `PROBLEM_RELEASE_ID` values can support only one repeating row type. Attempts to mix two or more repeating row types in a single API operation with generic `PROBLEM_RELEASE_ID`'s will return with an exception.

The *edit* screen layout, along with the repeating row layouts applicable to the update request, define which fields belong to which item group type, and therefore, which PROBLEM_RELEASE_IDxxx's apply.

When generic PROBLEM_RELEASE_ID's are used, all the specified fields must be grouped into the same item group type (via the edit layout and the repeating row layouts) – this item group type is used to qualify the PROBLEM_RELEASE_ID values.

Example of specific PROBLEM_RELEASE_ID Update

```
...&PROBLEM_RELEASE_ID3=111&PROBLEM_RELEASE_ID4=222&field1=val1&field2=val2
```

where field1 is in the repeating row layout of item group type 3 and field2 is in the repeating row layout of item group type 4, both of which are embedded in the edit layout for the user's current business area, project and role. Then two repeating rows are updated, one with field1=val1 and the other with field2=val2, each in a different repeating row type.

Example of generic PROBLEM_RELEASE_ID Update

```
...&PROBLEM_RELEASE_ID=111&field1=val1
```

where field1 is in the repeating row layout of item group type 3 and repeating row 111 is in item group type 3 results in the update of field1 in the specified row. Note that there is no item group type specified in the PROBLEM_RELEASE_ID variable name.

Using update to Add Repeating Rows

To add new repeating rows, values for fields in the repeating rows are provided without a corresponding PROBLEM_RELEASE_ID value. For each non-corresponding value of a field, a new repeating row is inserted. Thus, specifying &rr_field_a=1&rr_field_a=2&rr_field_a=3 with no specification of PROBLEM_RELEASE_ID will result in three new repeating rows being added with these values, assuming rr_field_a is a field in the repeating row. To update a repeating row value, you must provide the PROBLEM_RELEASE_ID value of the row in question.

Using update to Delete Repeating Rows

Within the ExtraView GUI, users check a box named PROBLEM_RELEASE_DELETE in order to delete a repeating row. The API can emulate this behavior, by setting PROBLEM_RELEASE_DELETE to the checked for value for any repeating row you wish to delete.

For example, use a call similar to the following to delete a repeating row:

```
http://www.myserver.com/evj/ExtraView/ev_api.action?  
user_id=username  
&password=password  
&statevar=update  
&id=nnnnn  
&problem_release_id=xxxxx  
&problem_release_delete=checked
```

Updating Document & Image type fields

These fields require additional metadata in the form of a description and the file to upload's character set. You will have created an HTML form for the upload. An HTML snippet that shows how to make this work is as follows:

```
Image Description: <input type="text" name="image_desc" value="image_dd_name desc" />
<br />
<input type="hidden" name="image_dd_name_charset" value="UTF-8" />
File to upload: <input type="file" name="image_dd_name" />
```

This form assumes an image field that has a data dictionary name of `image_dd_name`. Note the optional charset and desc. The charset is not required for image fields, but for documents it can be useful. The default, if charset is not given is UTF-8.

update_user_password

This action allows the user to update the password of an existing user within ExtraView.

SYNTAX

```
http://www.myserver.com/evj/ExtraView/ev_api.action?
user_id=username
&password=password
&statevar=update_user_password
&p_template_file=file.html
&security_user_id=user_name
&old_password=old_password
&new_password=new_password
[&access_token=token-value]
```

NOTES

You must provide the ID of an existing user in the `security_user_id` parameter.

You must provide both the old password and the new password. These will be checked internally within ExtraView to ensure they conform to any rule that may be in place.

You must have update permission to the security key named `SE_SECURITY_USER` before you can execute the command.

The optional `access_token` parameter allows you to use a valid OAuth2 token obtained with the `get_token` command. If you provide the `access_token` parameter, then the `user_id` and `password` parameters should not be provided. This prevents the password being sent in clear text over your network connection.

user_field_list

This action allows the user to retrieve all the fields that are part of the user record. It is typically used to generate a list of fields for which to provide values when creating a new user.

SYNTAX

```
http://www.myserver.com/evj/ExtraView/ev_api.action?  
user_id=username  
&password=password  
&statevar=user_field_list  
&security_user_id=user_name  
[&access_token=token-value]
```

NOTES

You must have query permission to the security key named SE_SECURITY_USER before you can execute the command. The list returned will show a plus character (+) if the field is required. A typical output from the command is shown below.

```
+SECURITY_USER_ID|Security User Id  
  
+SECURITY_PASSWORD|Security Password  
  
+FIRST_NAME|First Name  
  
+LAST_NAME|Last Name  
  
JOB_TITLE|Job Title  
  
COMPANY_NAME|Company  
  
ADDRESS_LINE1|Address Line1  
  
ADDRESS_LINE2|Address Line2  
  
CITY|City STATE|State  
  
POSTAL_CODE|Postal Code  
  
COUNTRY|Country  
  
+EMAIL|E-Mail Address  
  
WORK_TELEPHONE|Work Telephone  
  
HOME_TELEPHONE|Home Telephone  
  
CELL_PHONE|Cell Phone  
  
FAX|Fax  
  
PAGER|Pager
```

The optional `access_token` parameter allows you to use a valid OAuth2 token obtained with the `get_token` command. If you provide the `access_token` parameter, then the `user_id` and `password` parameters should not be provided. This prevents the password being sent in

clear text over your network connection.

user_group_list

This action allows the user to retrieve a list of all the user groups within the system. It is typically used to generate a list that validates adding a user to a user group.

SYNTAX

```
http://www.myserver.com/evj/ExtraView/ev_api.action?  
user_id=username  
&password=password  
&statevar=user_group_list  
&security_user_id=user_name  
[&access_token=token-value]
```

NOTES

You must have query permission to the security key named SE_SECURITY_GROUP before you can execute the command. A typical output from the command is shown below.

```
ADMIN:Administrator
```

```
CUSTOMER:Customer
```

```
HW_ENG:HW Engineering
```

```
QA:Quality Assurance
```

```
SW_ENG:SW Engineering
```

```
SUPPORT:Support
```

The optional `access_token` parameter allows you to use a valid OAuth2 token obtained with the `get_token` command. If you provide the `access_token` parameter, then the `user_id` and `password` parameters should not be provided. This prevents the password being sent in clear text over your network connection.

version

This action returns the build information of your ExtraView database.

SYNTAX

```
http://www.myserver.com/evj/ExtraView/ev_api.action?  
user_id=username  
&password=password
```

```
&statevar=version  
[&access_token=token-value]
```

NOTES

The information returned is a serial number of the last updates applied to the ExtraView database. A typical output from the command is shown below.

```
$Revision: 22 $  
$Modtime: 6/23/06 10:37p $
```

The optional `access_token` parameter allows you to use a valid OAuth2 token obtained with the `get_token` command. If you provide the `access_token` parameter, then the `user_id` and `password` parameters should not be provided. This prevents the password being sent in clear text over your network connection.