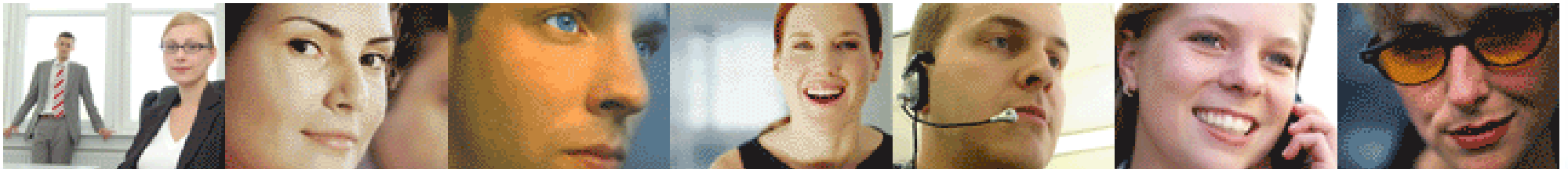


# ExtraView

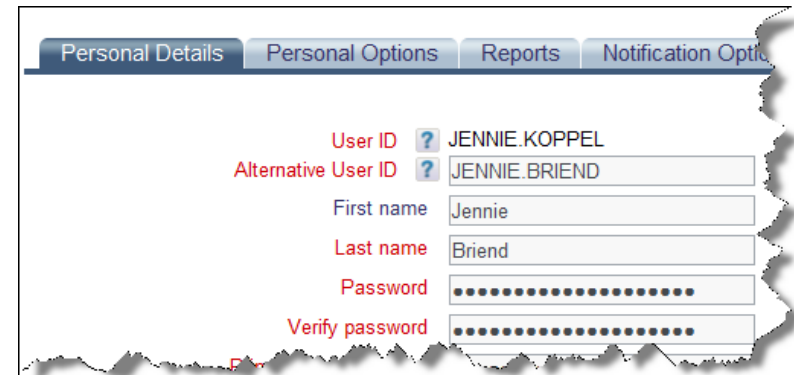
## ExtraView 6.5 & 6.5.1 New Features

This document is provided to ExtraView's customers under non-disclosure and for information purposes only. Its contents must not be shared with third parties without the permission of ExtraView Corporation



## Administration/Configuration

- ◆ Implemented an alternative, modifiable User ID – users and administrators can modify the User ID that is used to sign on
- ◆ Faster user accounts display
- ◆ Modules may be disabled / enabled
- ◆ Many .gif files replaced with .png files
- ◆ LDAP configuration changes – CUSTOM\_AUTHENTICATION has changed – now uses NO, YES, HYBRID, LDAP or LDAP-HYBRID as values
- ◆ LDAP timeout introduced to stop ExtraView giving the appearance that it has stopped working
- ◆ New LDAP connectivity option to synchronize with LDAP server outside of ExtraView, and use ExtraView's internal structure to handle user lookups (improved performance)



The screenshot shows a user profile configuration page with a navigation bar at the top containing 'Personal Details', 'Personal Options', 'Reports', and 'Notification Options'. The 'Personal Details' tab is active. The form contains the following fields:

- User ID: JENNIE.KOPPEL (with a help icon)
- Alternative User ID: JENNIE.BRIEND (with a help icon)
- First name: Jennie
- Last name: Briend
- Password: [Redacted]
- Verify password: [Redacted]

## Administration/Configuration

- ◆ Layouts may be loaded into memory at server start time – no lag in performance for the first user to access a layout after system startup
- ◆ Built-in support for “accordion” style folds in *Add* and *Edit* layouts
- ◆ New configuration to allow addition of related issues on Add / Edit screens – includes ability to configure a styled button along with a title for the display
- ◆ New relationship type of SIBLING

Return Print Page Pre-cache layouts at system startup

### Keys

You have added: 30 new pre-cached template(s)

Select one or more user roles: \*None\*

- All\*
- Admin\_Level 1
- Admin\_Level 2
- Customer

Select one or more areas and projects: \*None\*

- All\*
- Clients | Clients
- Clients | Contacts
- Customer Support | Customer Support

Select one or more layout types: \*None\*

- All\*
- Add Problem Screen
- Area/Project
- Attachment History

Select one or more locales: \*None\*

- All\*
- English(United Kingdom)
- English(United States)
- French(Canada)

Add Selected Keys Remove Selected Keys

### Filter List

Select the column to use as a filter for the list. You may click on a letter to produce a list of the items which begin with this character, or you may enter a search pattern, including wildcards (\*). The Export button creates a CSV file of the results currently displayed on the screen.

Select filter column for report: Area Title

or click on a letter: E | <all> | <none>

or enter a search expression and click the Go button: Enter search expression Go Export

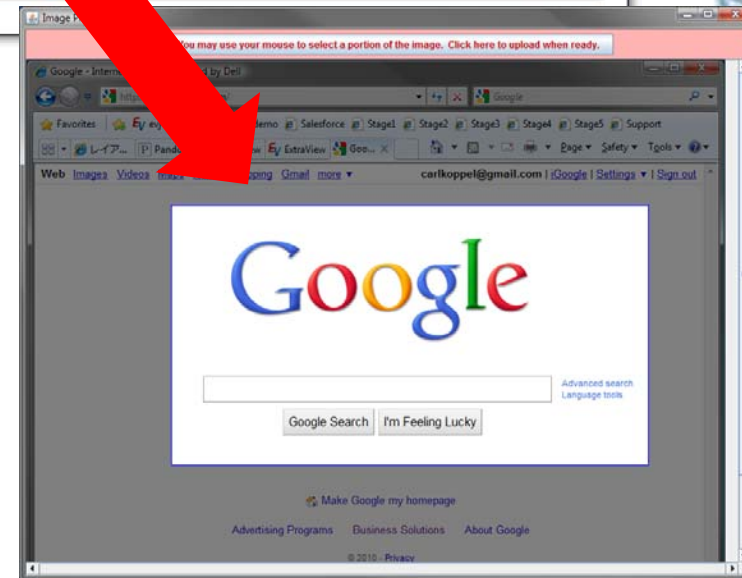
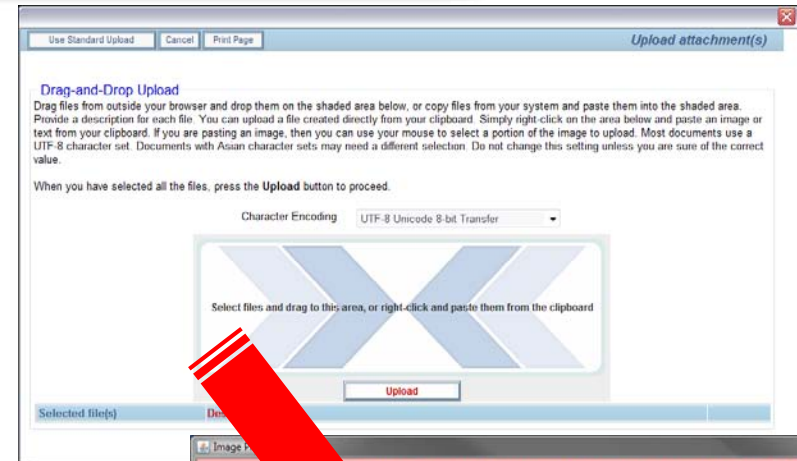
	Area Title	Project Title	Layout Type	Layout Id	Layout Title	Security Group	Display Mode	Locale	Created	Last updated
Del	Engineering Issues Defects	Add Problem Screen.4			Defects - Add Problem Screen	Admin_Level 1	(NULL)	en_US_	Carl Koppel	Carl Koppel
									8/6/10 3:27 PM	8/6/10 3:27 PM
Del	Engineering Issues Defects	Add Problem Screen.4			Defects - Add Problem Screen	Admin_Level 1	ADD	en_US_	Carl Koppel	Carl Koppel
									8/6/10 3:27 PM	8/6/10 3:27 PM
Del	Engineering Issues Defects	Add Problem Screen.4			Defects - Add Problem Screen	Admin_Level 1	REFRESH	en_US_	Carl Koppel	Carl Koppel
									8/6/10 3:27 PM	8/6/10 3:27 PM
Del	Engineering Issues Defects	Add Problem Screen.4			Defects - Add Problem Screen	Admin_Level 2	(NULL)	en_US_	Carl Koppel	Carl Koppel
									8/6/10 3:27 PM	8/6/10 3:27 PM

## Issue Management

- ◆ Can now add related issues on the *Add* screen
- ◆ Multiple repeating row layouts can be configured for inclusion in any *Add, Edit or Detailed Report, etc.* layouts
- ◆ New, simplified feature to add related issues on the *Edit* screen
- ◆ Ajax refreshes require use of *changed, changed\_to or changed\_from* to explicitly drive an *onchange* rule
- ◆ Repeating rows are rendered with Ajax – no more screen refreshes
- ◆ The `MINI_HISTORY` fields are now configurable
- ◆ Simplified processing to add new values (`ADD_NEW` attribute) when there are allowed values

## Issue Management

- ◆ New Java applet for attachment, document and image uploads – drag & drop, captures screenshots, enables cropping of screenshots
- ◆ New simplified method of adding child allowed values from the *Add* or *Edit* screen – can be configured so there is no need to add the Area / Project fields or the currently selected parent



## Query / Reporting

- ◆ Report scheduler to deliver reports by email to users – column reports, matrix reports, summary reports and charts – full administrative interface

Subject Line  
Carl's Open Issues

Email Body

Font Size B I U A [Icons]

HTML

This is a list of my enormous list of open issues. :-)

This is scheduled to run each night until we get bored of seeing the list.

Carl

Schedule Report Run Now Delete Cancel Print Page

Schedule Recipients Email Layout Options

Schedule Enabled ?

Frequency ? Daily

Start no sooner than ? 4:00 a.m.

Schedule Report Run Now Delete Cancel Print Page

Schedule Recipients Email Layout Options

Use the User button to the right of the input field to find and select multiple users to add. Add one or more names. Separate names with a semi-colon.

Click to select user(s) [User Icon]

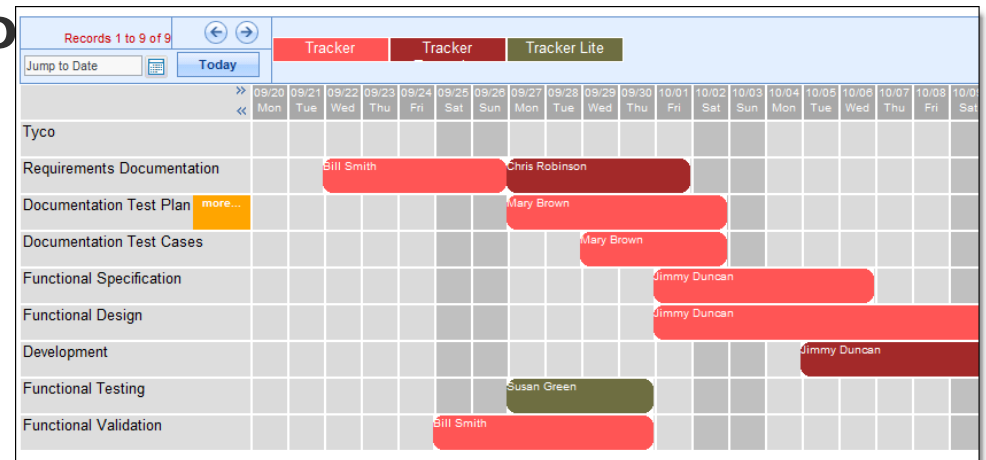
	User ID	User Name	First Name	Last Name	Company
Report Owner	CARL KOPPEL	Carl Koppel	Carl	Koppel	ExtraView Corporation
Del	CHERTZER	Cynthia Hertzner	Cynthia	Hertzner	ExtraView Corporation

- ◆ Entire repeating row layouts may now be placed on reports
- ◆ Now have up to 8 sort orders and group by levels on column reports
- ◆ Hierarchical reports now work with Apache Derby database

## Query / Reporting

### ◆ New Planning Report type

- Relates a parent issue to multiple related child issues
- Each child issue has two dates – e.g. a start and an end date
- Work interactively on the report to move the entire child issues to a different point in time, or to alter the start or end time



### ◆ New button to display report metadata

The screenshot shows the 'Column Report Options' dialog box. The 'Report title' is 'Bugs I Fixed in January'. The 'Output to Browser' is set to '20 rows per page'. The 'Condensed Output' checkbox is checked, and the 'Expanded Output' checkbox is unchecked. The 'View Button' and 'Edit Button' are visible. A tooltip titled 'Report Details' is displayed over the 'View Button', showing the following information: Title: Bugs I Fixed in January, Report ID: 94, Created By: ExtraView, Last Updated By: ExtraView, Date Created: Oct 1, 2003, Last Updated: Oct 1, 2003.

## Business Rules

- ◆ Can now control the “checked” and “unchecked” values for Generate Email and Include Customers in Notifications
- ◆ The ADD and COPY rules can now handle attachments
- ◆ ERROR: action now works within onchange directive
- ◆ Logging improvements – can now turn on the log for one or a group of rules
- ◆ The ADD\_ROW: action has been extended to work with multiple repeating rows



## User Custom

- ◆ New exit for Mass Update – typically used to control the list of updatable fields
- ◆ New exit to control the menubar buttons on the *Add / Edit* screens
- ◆ Ability to control the viewing and downloading of attachments
- ◆ Expedited Add as opposed to using apiAdd

## API/CLI/Web Services

- ◆ The API has been extended to handle document and image display type fields
- ◆ `get_attachment` and `evdownload` now work with attachments on the file system
- ◆ `evdownload` enhancement to download all attachments for one or more issues at one time